



MAXIMIZE YOUR YEAR-END GIVING

Three Matching Opportunities!



\$1 FOR \$1 MATCHING OPPORTUNITIES

- OPERATING FUND - GENERAL CPCF FUND
- SYMPHONY ON THE LAWN PROJECT FUND

\$2 FOR \$1 MATCH OPPORTUNITY

CPCF COMMUNITY
GRANTMAKING FUND

SCHOLARSHIP WINNERS

CPCF AWARDS OVER 100
SCHOLARSHIPS IN 2024

ST. MARY CHURCH GOD'S GROCERIES

> HELPING FAMILIES IN SOUTH LAKE
COUNTY STRUGGLING WITH FOOD
INSECURITIES.

5 QUESTIONS

WITH CPCF
BOARD MEMBER
> DICK SAUERMAN

LETTER FROM THE PRESIDENT

IT'S NOT HOW MUCH WE GIVE, BUT HOW MUCH LOVE WE PUT INTO GIVING.

MOTHER TERESA
ALBANIAN-INDIAN CATHOLIC NUN

Make a Greater Impact with Your Generosity this Holiday Season!

MARY B. NIELSEN
PRESIDENT

This holiday season, as the world sparkles with warmth and celebration, there's a unique opportunity to give back and make a real difference right here in our community. At the Crown Point Community Foundation (CPCF), we believe that the season's true spirit lies in the acts of kindness and generosity that uplift others.

Your support can go further than you might imagine. By giving through CPCF, you're helping create lasting change that addresses our community's most pressing needs: strengthening local nonprofits, providing scholarships for students, and supporting critical initiatives that touch countless lives. Together, we can build a future of hope and possibility for everyone in our community.

Whether it's establishing a fund, making a year-end contribution, or honoring a loved one through a memorial gift, there are countless ways to give. Every act of generosity brings us one step closer to creating a brighter tomorrow. This holiday season, let's come together to spread kindness and create a legacy of impact that lasts well beyond the holidays.

Earlier this year we announced a special **\$1,875,000 Matching Challenge** made available by the generosity of Lilly Endowment Inc. This unique opportunity allows you to increase the impact of any gift to the CPCF Community Grantmaking Fund or any named unrestricted fund. With this \$2 for \$1 matching challenge, a \$100 donation can become a \$300 contribution, magnifying your impact in our community. Additionally, \$1 for \$1 matches are available for gifts to the Operating Fund - General CPCF Fund and the Symphony on the Lawn Project Fund. Imagine the transformative difference your amplified gift can make!

As the year comes to a close, please consider including the Crown Point Community Foundation in your year-end giving plans. Whether through cash or check, an online donation by credit card, an IRA distribution, or the gift of appreciated stocks or securities, your donation will help us continue our mission to enhance the quality of life in South Lake County and beyond for now and for future generations.

On behalf of our Board of Directors and staff, we extend our heartfelt thanks for your ongoing support and partnership. We wish you and yours a joyful and fulfilling holiday season!

MARY B. NIELSEN



NOVEMBER 2024
VOLUME 24, FALL EDITION

PUBLISHER
MARY B. NIELSEN

CREATIVE DIRECTOR
JEANETTE HUSS

CPCF BOARD OF DIRECTORS

MIKE DEXTER, CHAIRMAN OF THE BOARD
EDWARD JONES INVESTMENTS

CYNDI WALSH, 1ST VICE CHAIR
WALSH ADVISORS

COREY LISS, 2ND VICE CHAIR
CARSTAR LISS AUTO BODY

GREG FORSYTHE, SECRETARY
FORSYTHE WEALTH MANAGEMENT

DARRYL MILLER, TREASURER
RETIRED, INLAND STEEL

CHRISANNE CHRIST, EX OFFICIO
CENTIER BANK

JOHN BARNEY, EX OFFICIO
BARNEY ENTERPRISES

BEN BALLOU
BALLOU LAW, LLC

JEFF BAN
DVG TEAM, INC.

INDIRA BRIGHAM
UNIVERSITY OF ST. FRANCIS

DAN DUNCAN
PEOPLES BANK

KEVIN HUSEMAN
KINGDOM HOUSING, LLC

DEAN JONES
MIRAR CUSTOM HOMES, INC.

JENNIFER LINSLEY
CROWN POINT SCHOOLS

JOHN MANIS
HEIDBREder, INC.

DANIEL ROOT
COMMUNITY ADVOCATE

DICK SAUERMAN
RETIRED, NEW BUFFALO SAVINGS BANK

SHANNON SHEEHY
SHEEHY WELL & PUMP CO., INC.

PAMELA SEAMAN, DO
SOUTH LAKE WOMEN'S HEALTH, P.C.

CPCF STAFF

MARY B. NIELSEN, PRESIDENT
GAIL ANDRE, DAWN KELLY, JEANETTE HUSS,
KATIE SLY, KATHY WILLIAMS

CONTACT

115 S. COURT STREET, CROWN POINT, IN 46307

p 219.662.7252 f 219.662.9493

w thecpcf.org e info@thecpcf.org

f facebook.com/crownpointcommunityfoundation

y youtube.com/crownpointcommunityfoundation

x x.com/thecpcf





THE AWARDS NIGHT WAS NOT ONLY A GREAT REMINDER OF THE EXCEPTIONAL EDUCATORS AND STUDENTS WE HAVE IN OUR SERVICE AREA, BUT ALSO THE GENEROSITY OF OUR DONORS WHO PROVIDE THE MEANS TO CREATE THE SCHOLARSHIPS AWARDED.

BEN BALLOU

CROWN POINT COMMUNITY FOUNDATION BOARD MEMBER

< 2024 DONALD AND PHYLLIS (DILLBAUGH) ROSS PURDUE SCHOLARSHIP RECIPIENTS ALLIE HOPKINS AND WILLIAM SHERMAN ARE CONGRATULATED BY CPCF BOARD MEMBER BEN BALLOU.

14



22



12



26

ON THE COVER MAXIMIZE YOUR YEAR-END GIVING THREE MATCHING OPPORTUNITIES!

8



I HAD THE PLEASURE OF PARTICIPATING IN THE DIGITAL FUNDRAISING WORKSHOP HOSTED BY THE CPCF NONPROFIT ACADEMY. THE SUPPORTIVE ENVIRONMENT FOSTERED COLLABORATIVE LEARNING, ALLOWING ALL PARTICIPANTS TO EXCHANGE IDEAS AND SUPPORT ONE ANOTHER WHICH WAS A BLAST!

LAUREN ZURBRIGGEN
DIRECTOR OF DEVELOPMENT
AT ST. JUDE HOUSE

CONTENTS

- 2 LETTER FROM THE PRESIDENT
- 5 COMMUNITY GRANTS
- 19 UNIVERSAL SCHOLARSHIP APPLICATION OPENS JANUARY 1, 2025
- 24 DONORS
- 28 MEMORIALS
- 30 HONORARIUMS
- 32 UPCOMING EVENTS

FEATURE STORIES

- 4 ST. MARY CHURCH GOD'S GROCERIES
- 8 MAXIMIZE YOUR YEAR-END GIVING - \$2 FOR \$1 AND \$1 FOR \$1 MATCHING OPPORTUNITIES
- 12 15TH ANNUAL VOLUNTEER FAIR
- 14 2024 SCHOLARSHIP RECIPIENTS
- 20 NONPROFIT ACADEMY
- 22 WOMEN'S GIVING CIRCLE
- 26 HUMANE SOCIETY OF HOBART
- 27 WELCOME NEW BOARD MEMBERS AND STAFF
- 31 FIVE QUESTIONS FOR DICK SAUERMAN



Scan QR Code to Give Online Today:
cpcf.fcsuite.com/erp/donate



20



PHOTOS CLOCKWISE FROM TOP LEFT: VOLUNTEERS HELP BAG GROCERIES FOR RESIDENTS / DON HEIN ORGANIZES THE FOOD FROM A RECENT FOOD DELIVERY / SHELVES AT GOD'S GROCERIES / ITEMS THAT ARE AVAILABLE FOR CLIENTS OF GOD'S GROCERIES / JOHN NAWROCKI PACKS MUCH NEEDED SUPPLIES FOR THOSE IN NEED.

With your help, those struggling with food insecurity were given a monthly hand.

A grant for \$10,000 was awarded by the Crown Point Community Foundation to St. Mary Church's God's Groceries program.

St. Mary's God's Groceries provides and promotes balanced nutrition for an underserved population of senior citizens, homeless individuals, the working poor, seasonal working people with families, and individuals who have lost their employment. Groceries are distributed the third Saturday of every month from 8:00-10:00 a.m. on the St. Mary's parking lot. Food is also provided to people who come to the parish office in need of food. The food bank's mission has grown increasingly challenging due to the rising cost of groceries.

"Historically, God's Groceries has been supported by donations from the parishioners at St. Mary's Church," said Elaine Hein, Co-Leader of God's Groceries. "The Leadership Team realized

what challenges we had ahead of us. With the number of clients increasing, the amount of money we receive will soon not be enough to cover the rising cost of that food."

"We provide a balance of food consisting of protein, fruit, vegetables and grains," Hein said. "Everything we give out is shelf stable unless we receive a specific donation, such as at Thanksgiving. Many of our clients receive SNAP benefits that do not include paper goods and personal care items. We include two rolls of toiletry paper in the bags of groceries they receive.

To learn more about God's Groceries, visit www.stmarycp.org/gods-groceries.

THANKS TO THE GENEROUS GRANT FROM THE CROWN POINT COMMUNITY FOUNDATION, WE'VE BEEN ABLE TO ENHANCE THE SUPPORT WE PROVIDE TO THE FAMILIES WHO RELY ON US EVERY MONTH.

ELAINE HEIN
CO-LEADER OF GOD'S GROCERIES
ST. MARY CHURCH GOD'S GROCERIES



COMMUNITY GRANTS

THE CPCF AWARDED \$148,875.00 IN UNRESTRICTED COMMUNITY GRANTS IN THE **FEBRUARY CYCLE**.

Arts, Culture - \$3,500.00

National Society of the Daughters - \$3,500

In collaboration with the City of Crown Point, the DAR honors veterans during the holiday season by placing fresh wreaths on their gravesites at both Maplewood cemeteries.

Community Improvement - \$7,075.00

Cedar Lake Historical Association - \$7,075

Funding for kitchen enhancements provide an opportunity to develop a safe, professional environment in which to prepare food to add culinary experiences centered around the history and culture of Lassen's Resort.

Education - \$15,675.00

Crown Point High School - \$3,000

Funds to provide students with financial challenges the opportunity to take AP exams.

Dunes Learning Center - \$2,500

These funds will allow Crown Point High School Environmental Science students to learn, work together, and explore career opportunities outdoors at Indiana Dunes National Park.

Franciscan Health Foundation - \$7,500

Funding to support the April 2024 Safe Kids Day in Crown Point, as well as training for the community safety programs.

Northwest Indiana Special Education Cooperative (Eagle Park Community) - match up to \$2,675

Support for the Northwest Indiana Special Education Cooperative to install an American flag at its facility to engage students in civic education and responsibility.

Food, Nutrition, Agriculture - \$35,000.00

Community Help Network - \$25,000

The Buddy Bag Program provides weekend supplemental nutrition for public school students in South Lake County that qualify for the Federal Free Lunch Program, and the Household Pantry provides necessary items for low income families.

St. Mary Church (God's Groceries) - \$10,000

Funding to support God's Groceries which provides/promotes balanced nutrition for the underserved population.

Human Services - \$70,500.00

Erin's Farm - match up to \$6,000

Funding for Erin's Farm NFP Rescue and Sanctuary to obtain a Utility Terrain Vehicle (UTV) to allow those with physical & mobility impairments to fully partake in all that Erin's Farm has to offer our community.

Exceptional Equestrians Unlimited - \$2,500

Providing funding for operating expenses of the therapeutic horseback riding program.

Momentum Church - match up to \$5,000

Funding to install a chairlift/elevator to provide access to the lower level of the facility so elderly and disabled individuals can have full access to various community programs and services offered.

Northwest Indiana Cancer Kids Foundation - \$15,000

Support for the Financial Assistance Program for families who have a child battling cancer in South Lake County.

Opportunity Enterprises - \$5,000

Funding to support for the fully inclusive and disability-accessible summer day camp.

Phil's Friends - \$1,500

Funding to provide 75 care packages and to write cards of hope for cancer patients at St. Mary's Medical Center and Franciscan St. Margaret's Hospital.

Pink Ribbon Society - \$4,000

Funding to update and redesign the Pink Ribbon Society website.

Power Paws for Kids - match up to \$1,500

Support for general operating expenses and miscellaneous desired purchases.

REAL Services - \$3,000

Funding to provide each caregiver in Crown Point with "The 36-Hour Day: A Family Guide to Caring for People Who Have Alzheimer Disease and Other Dementias" by Nancy Mace and Peter Rabins.

SAFE Coalition for Human Rights - \$15,000

Funding to support the program of restoring the dignity & self respect of females trafficked since their teens, entrusting them as stewards of human potentials for current & future residents.

St. Michael's Wheelchair Ramp Ministry - \$2,000

Funding to support the installation of aluminum wheelchair ramps, free of charge, that can be reclaimed and reused after the clients need no longer exists.

Veteran Impact Services - \$10,000

Funding to support the expansion of veteran outreach capabilities and programs in the community.

Public Safety - \$3,125.00

Cedar Lake Police Department - match up to \$3,125

Funding for the Cedar Lake Police Department to purchase 12 CBRN Gas Masks and 50 CBRN Cartridges to proactively prepare their department for Chemical, Biological, Radiological, Nuclear (CBRN) threats to the community.

Recreation - \$3,500.00

Crossroads YMCA - \$3,500

Funding to support the 5K/2K race, which raises funds for the YMCA Financial Assistance Program.

Youth Development - \$10,500.00

Boy Scouts of America - \$4,000

Funding to support the overnight camping event at the Lake County Fairgrounds to experience all scouting has to offer for returning and new scouts.

Boys & Girls Clubs of Greater NWI - \$6,500

The Cedar Lake Boys & Girls Club continues to ensure youth ages 5-18 are offered a safe space after school with a provided snack and age-appropriate programming at an affordable cost.

COMMUNITY GRANTS

THE CPCF AWARDED \$133,212.40 IN UNRESTRICTED COMMUNITY GRANTS IN THE JUNE CYCLE.

Animal Related - \$10,000.00

The Humane Society of Hobart - \$10,000

Project H.O.P.E. (Helping our Pets Effect) brings resource equity to pet families and keeps pet families together through provision of affordable veterinary care and pet family resources.

Arts, Culture - \$4,000.00

City of Crown Point - \$4,000

Support for the 2024 Crown Point 4th of July Parade (\$2,500 general support; \$1,500 for Jesse White Tumblers to perform).

Community Improvement - \$6,012.40

Second Life Resale Shoppe - \$6,012.40

Support to purchase safe and secure donation drop-off bins that can lock securely.

Education - \$28,000.00

Crown Point Community School Corporation - \$28,000

\$15,000 - Support for the CPCSC in launching a STEM class at every elementary school in the 2024/2025 school year, introducing students to STEM topics as well as helping to develop their curiosity and imagination in this important area of study.

\$5,000 - Support for CPCSC elementary schools that provide preschool for students with and without disabilities by purchasing gross motor equipment and early literacy supplies.

\$8,000 - Funding for equipment needed to provide physical and emotional needs for students with severe disabilities that are continuing their education with Crown Point Schools until the age of 22.

Food, Nutrition, Agriculture - \$25,000.00

Meals on Wheels of NWI - \$15,000

Support to continue delivering nutritious meals with a wellness check and friendly visit to primarily low-income seniors and other vulnerable individuals who are unable to shop or prepare healthy meals in South Lake County.

Pack Away Hunger - \$10,000

At this one-day service event at Crown Point High School on Oct. 5, 250 community volunteers of all ages and abilities worked together to package 100,000 highly nutritious, shelf-stable meals for distribution throughout Lake County.

Health - \$9,000.00

American Cancer Society - \$1,000

The American Cancer Society Relay For Life is a volunteer-led experience that brings together passionate supporters who embody the American Cancer Society vision to end cancer as we know it, for everyone.

Jacob's Ladder Pediatric Rehab Center - \$8,000

The Little Listeners Road Show is a program that aims to screen "typical" children's hearing enrolled in daycare programs as a preventative measure and to monitor their language progression over time to ensure age-appropriate language acquisition.

Housing, Shelter - \$25,000.00

Catholic Charities, Diocese of Gary - \$25,000

The Homeless Prevention Program assists residents avoid homelessness by providing financial assistance to stop an eviction/default of mortgage payments and/or disconnection of utility services.

Human Services - \$21,200.00

Chasing Dreams - \$5,700

The Chasing Dreams Summer Camp is designed to provide educational life experiences to individuals with various disabilities (5 years and older) transition into life as independent, productive members of the community.

First Presbyterian Church of Crown Point - \$2,500

These funds will help expand the Food Pantry and Free Meal Program.

South Lake County Agricultural Historical Society - \$8,000

Funding to purchase an additional accessible people mover to aid in service to the people in NWI at various events in the region.

White's Residential & Family Services - \$5,000

Funding to support their Family Services programming, with particular focus on Foster Care, in South Lake County.

Youth Development - \$5,000.00

Girls Scouts of Greater Chicago and NWI (GSCCNWI) - \$5,000

GSCCNWI will host a series of seasonal outdoor activities including a lakefront campfire, ice skating, and horseback riding aimed at engaging and supporting current and prospective Girl Scouts in South Lake County.

COMMUNITY GRANTS

THE CPCF AWARDED \$162,070.87 IN UNRESTRICTED COMMUNITY GRANTS IN THE **SEPTEMBER CYCLE**.

Animal Related - \$18,750.00

Humane Indiana - \$7,500

Enhancing TNR efforts in South Lake County by providing free spay/neuter, vaccinations, and flea treatment for community cats, supported by essential medical equipment.

New Leash on Life - match up to \$11,250

By creating three-dimensional renderings for a new animal welfare facility, it will inspire donor enthusiasm and enable community members to fully visualize the future facility.

Arts, Culture - \$15,000.00

Northwest Indiana Symphony Society - \$10,000

The Northwest Indiana Symphony will produce and expand its 83rd season to 5 full Symphony concerts, 2 small ensemble matinees, and 1 stand alone Symphony Chorus concert.

South Shore Arts - \$5,000

Funding to provide free elementary school arts & literacy outreach program and support for the annual exhibit celebrating high school & middle school artists.

Community Improvement - \$10,000.00

Bethel Church - \$10,000

Repair and remodel a newly purchased building to serve as a community counseling center, video recording studio, and office space for not-for-profit partners.

Economic Development - \$8,600.00

Indiana Plan for Equal Employment - \$8,600

Creating opportunities for the under-represented, minorities and women in the construction trades by providing basic construction awareness training to prepare them for the apprenticeship application process.

Education - \$5,485.87

Hanover Community School Corporation (Middle School) - \$485.87

Providing options for students who prefer to sit on the floor and work at tables with a small group instead of at a traditional desk.

Junior Achievement of Chicago - \$5,000

The JA Town combines in-class learning with a day-long visit to a simulated town, allowing students to operate banks, manage restaurants, write checks and connect what they learn in school with the real world

Food, Nutrition, Agriculture - \$30,000.00

Holy Spirit / St. Vincent DePaul Society - \$20,000

The Holy Spirit / St. Vincent DePaul Food Pantry & Housing Assistance Programs continue to provide supplemental food and offer emergency assistance with rent, mortgage and utilities to our neighbors in need.

TradeWinds Services - \$10,000

The TradeWinds Community Pantry serves Lake & Porter County residents in need of a helping hand due to food insecurity.

Health - \$7,000.00

Alzheimer's Association Of Greater Indiana - \$2,000

ALZ CARES (Community Alliances for Risk Reduction, Education and Support) exists to develop and leverage alliances with local community leaders, influencers and organizations to open doors, identify community needs, and meet and mobilize volunteers.

Visiting Nurse Association of NWI - \$5,000

Providing hospice and palliative care and support to seriously or terminally ill patients and families in the South Lake County region.

Human Services - \$33,985.00

Alpha Family Resale - \$12,000

Funds to assist with one year of our Gift Card Program for families in need.

Best Buddies Indiana - \$2,500

Friendship programs build one-to-one friendships for people with and without intellectual and developmental disorders (IDD), helping people to form meaningful connections, gain self-confidence and self-esteem, and improve inclusion for all.

DAV Indiana Service Foundation - match up to \$8,335

The DAV Transportation Network provides essential, no-cost transportation services for veterans, ensuring they can access VA medical appointments, thereby improving their health outcomes and supporting their overall well-being.

Golden Hope Ministries - \$5,100

(\$4,789.00 CPCF Community Grantmaking Fund + \$311.00 The Manis Family Fund)*

A national speaker with expertise on grief and bereavement will present two seminars to the Lake County community informing professionals in Education and Human Services on how to support the bereaved population.

Hanover Community School Corporation

(Red Cedars Social Work Dept.) - \$3,050

Providing necessities for students in need through the Hanover Schools Caring Closet.

Hearts In Motion - \$3,000

The New Directions Program helps families transition from a traumatic event into a new home with necessary life essentials and follow up supportive services.

Public Safety - \$25,000.00

Winfield Police Department - \$25,000 contingent

Funds to upgrade our portable radios so that our officers have communication when out of their police cars.

Youth Development - \$8,250.00

Girls on the Run of Northwest Indiana - \$2,000

By providing scholarship assistance to girls in South Lake County, they can be a part of their Girls on the Run team to be joyful, healthy and confident through social-emotional learning and physical activity.

Indiana Youth Group (IYG) - \$6,250 contingent

Indiana Youth Group (IYG) is launching an LGBTQ+ Youth Center in Northwest Indiana to establish safe and affirming spaces for LGBTQ+ young individuals within a one-hour drive, ensuring accessibility and support for them, regardless of their geographical location.

MAXIMIZE YOUR *Year-End Giving* WITH THREE MATCHING OPPORTUNITIES



ON BEHALF OF THE CPCF, WE EXTEND OUR HEARTFELT GRATITUDE TO OUR GENEROUS DONORS, BOTH NEW AND LONG-STANDING. YOUR GIFTS TRANSFORM LIVES, PROVIDING HOPE AND OPPORTUNITY FOR A BRIGHTER FUTURE FOR THOSE WE SERVE, AND STRENGTHEN OUR ORGANIZATION.

PLEASE CONSIDER THE CPCF IF YOU ARE THINKING OF LEAVING A LEGACY IN YOUR NAME, TO FOREVER SUPPORT THE ORGANIZATIONS WHO MEAN SO MUCH TO YOU AND YOUR FAMILY.

MIKE DEXTER
CPCF CHAIRMAN OF THE BOARD



The Crown Point Community Foundation provides countless ways to create meaningful, lasting change in our community—and this holiday season, your support can go even further!

As part of the Lilly Endowment Inc.'s GIFT VIII initiative, we're thrilled to share the Crown Point Community Foundation's **\$1,875,000 Matching Challenge**. This transformative opportunity maximizes the power of your gifts, enabling us to broaden our unrestricted grantmaking, support essential community projects and programs, and enhance our organizational capacity for even greater impact.

This opportunity aligns with our long-term vision and commitment to not only meet but anticipate the evolution of the needs and aspirations of South Lake County through a diverse array of impactful programs and initiatives.

The next two pages outline the available matching opportunities that prioritize immediate community needs while also investing in long-term sustainability and capacity building, both for the CPCF and the local nonprofit sector.

"These generous matching opportunities enable foundations like CPCF to create lasting, positive change in the communities we

serve," said CPCF President Mary Nielsen. "Now, with Lilly Endowment's Matching Fund Grants, every donation can go even further."

"The holiday season is a reminder to be thankful and generous in sharing our blessings with others," said CPCF Board Member Greg Forsythe.

Here are the four areas that are included in the GIFT VIII matching challenge:

CPCF COMMUNITY GRANTMAKING FUND OR ANY NAMED UNRESTRICTED FUND - \$2 FOR \$1 MATCH

A core component of our work involves expanding our support to address ever-changing and relevant community needs through our unrestricted community grantmaking. These funds allow us the flexibility to be both reactive and proactive in addressing community challenges and opportunities. We recognize that the needs of our community are dynamic, and our funding strategies must be equally adaptable. By growing our unrestricted endowed assets, we can provide more support to current critical needs, address emerging challenges, and capitalize on new opportunities that enrich the quality of life for all residents.



**CPCF COMMUNITY GRANTMAKING FUND
OR ANY NAMED UNRESTRICTED FUND**
\$2 FOR \$1 MATCH

SCAN QR CODE TO GIVE TODAY.



**OPERATING FUND - GENERAL
CPCF FUND**
\$1 FOR \$1 MATCH

SCAN QR CODE TO GIVE TODAY.



**SYMPHONY ON THE LAWN
PROJECT FUND**
\$1 FOR \$1 MATCH

SCAN QR CODE TO GIVE TODAY.

"Providing the youth in our community with nutritious snacks and free/reduced memberships allows them access to many different basic needs," said Brandon Boyer, Club Director at Cedar Lake Boys & Girls Club, a community grant recipient. "These include nutritional support, academic and social success, equity, access, safety, supervision, and most importantly, a positive environment where they are allowed to develop and flourish as they grow. We strive to continue to provide the necessary resources to our youth and their families to not only create successful youth, but also successful families and a positive community to reside in."

"No one has ever become poor by giving," as Anne Frank wisely

said," shared CPCF Board Member Cyndi Walsh. "Year-End Giving is a great way to take part in the giving season and receive benefits of a giving spirit."

**OPERATING FUND - GENERAL CPCF FUND -
\$1 FOR \$1 MATCH**

By investing in the growth of our own internal capacity, most significantly towards the development of a new headquarters, we are investing in our ability to better serve our local nonprofits and the overall community, and to operate more efficiently and effectively to fulfill our mission of enhancing the quality of life in

CONTINUED ON PAGE TEN

\$1,875,000 Matching Opportunities

MATCH COMPLETED

<p>CPCF COMMUNITY GRANTMAKING FUND OR ANY NAMED UNRESTRICTED FUND \$1,500,000 IN AVAILABLE FUNDS</p>	<p>\$2 FOR \$1 MATCH</p>	<p>\$1,065,522.50 COMPLETED</p>
<p>OPERATING FUND - GENERAL CPCF FUND \$187,500 IN AVAILABLE FUNDS</p>	<p>\$1 FOR \$1 MATCH</p>	<p>\$113,771.36 COMPLETED</p>
<p>CPCF NONPROFIT CAPACITY BUILDING PROGRAMS \$147,500 IN AVAILABLE FUNDS</p>	<p>\$1 FOR \$1 MATCH</p>	<p>\$147,500.00 - MATCH COMPLETED</p>
<p>SYMPHONY ON THE LAWN PROJECT FUND \$40,000 IN AVAILABLE FUNDS</p>	<p>\$1 FOR \$1 MATCH</p>	<p>\$18,325.00 COMPLETED</p>

AS OF NOVEMBER 6, 2024.

MATCH TIMELINE: OCT. 1, 2023 - DEC. 31, 2025.
OR UNTIL THE FUNDING HAS BEEN EXPENDED.



**HELP US LEAD, ENGAGE
AND ENRICH OUR COMMUNITY**



WHY WE GIVE: Centier Bank strives to ensure that the quality of life for all who live and work in our communities is a top priority. Through corporate dollars, volunteerism, and financial education, we consistently aim to make a greater impact in our communities. Centier has preserved hometown banking since 1895, and promises to continue that legacy for generations to come.

MISSION: Indiana's largest private, family-owned bank is a testament to the idea that no matter how large a business grows, it is still possible to provide remarkable service. This comes naturally to Centier associates because of our servant heart culture. We have come to be known for warm, personalized service and relationship-style banking. Centier Bank's commitment to community means neighbors are serving neighbors, working together to create a better way of life today and for future generations.



**Member
FDIC** www.centier.com

Centier Bank and our Associates are dedicated to the communities we serve across Indiana.

MATCHING OPPORTUNITIES, CONTINUED FROM PAGE NINE

South Lake County and beyond. These funds help support our mission by allowing us to expand programming, increase staff capacity/efficiency, and enhance our visibility in the community. These strategic investments in infrastructure are critical for ensuring that the CPCF has the ability to meet future demands and continue serving the community for years to come.

SYMPHONY ON THE LAWN - \$1 FOR \$1 MATCH

Our annual Symphony on the Lawn program, in its 24th year, is far more than just a cultural event. This free community event, hosted in partnership with the Northwest Indiana Symphony Orchestra, represents an opportunity to foster unity, celebrate diversity, and elevate an appreciation for the arts. This event, that annually attracts over 4,000 residents of all demographics, not only showcases local and regional artistic talents but also serves as a platform for community members to come together in celebration of the performing arts. These funds allows us to continue investing in a cultural asset that brings people together, broadens the exposure and appreciation of the arts, and showcases local artistic talents, including those involved in youth orchestras and choirs.

CPCF NONPROFIT CAPACITY BUILDING PROGRAMS - MATCH IS COMPLETE, THANK YOU!

Recognizing the pivotal role of local nonprofit organizations in community development, we are investing in their future through the Nonprofit Academy, a comprehensive workforce development initiative designed to bolster the effectiveness and talent retention in the Lake County nonprofit sector. The Academy is structured around four key pillars: Workshops, Annual Conference, Peer Communities, and a Leadership Bootcamp.

The CPCF, in partnership with other community foundations, has provided various professional educational opportunities in the past, but nothing on a consistent and annual basis. This new initiative provides an innovative solution to address immediate internal capacity needs and lays the foundation for sustainable growth and opportunities within the local nonprofit sector.

"As 2024 comes to a close, it gives us an opportunity to count our blessings, and examine how each one of us can make a difference," said CPCF Board Member Shannon Sheehy. "Every donation to the Foundation, no matter how large or how small, makes our community a stronger and better place to live."

To celebrate **Giving Tuesday** on December 3, 2024, we invite you, our friends to help build the Funds held at the Crown Point Community Foundation. Please consider making a holiday or end-of-year gift today.

\$2 FOR \$1 *Match Opportunity!*

**TRIPLE YOUR IMPACT BY GIVING TO THE
CPCF COMMUNITY GRANTMAKING FUND
OR ANY NAMED UNRESTRICTED FUND LISTED BELOW.**

\$1,500,000 IN AVAILABLE FUNDS

Alex and Ila Magiera Endowment Fund
Art Hill Ford/Lincoln Mercury/Carroll Chevrolet Endowment Fund
Bates Family Unrestricted Endowment Fund
Benjamin T. & Angela J. Ballou Unrestricted Endowment Fund
Bill & Betty Kennedy Family Endowment Fund
BJ & Kay Hubbard Endowment Fund
Bob and Bernice Anderson Endowment Fund
Cedar Lake Community Endowment Fund
Charlie and Marilyn Kaper Unrestricted Endowment Fund
Clayton Dyer Root Endowment Fund
CPCF Community Grantmaking Fund
Corbin Family Unrestricted Endowment Fund
Corey & Charlotte Liss Community Endowment Fund
Daniel Reinhardt Root & Carol McInerney Root
Unrestricted Endowment Fund
Darryl & Patricia Miller Endowment Fund
David & Helen Batusic Unrestricted Fund
Dean and Barbara White Unrestricted Endowment Fund
Dexter Family Endowment Fund
Dolores E. White Unrestricted Endowment Fund
Don & Alice Burrell Family Endowment Fund
Don and Joyce Carnahan Endowment Fund
Donald and Joyce Huber Family Endowment Fund
Donald and Theresa Cowan Family Fund
Dr. William and Ramona Jean Smead Family Fund
Edward G. and Katherine R. Gerlach Huber Memorial Fund
Edwin and Catherine Huber Family Endowment Fund
First Financial Bank Endowment Fund
Fran and Billie Hoffman Fund
G.W. Gintert Family Fund
Geisen Family Endowment Fund
Gordon and Nina Bates Endowment Fund
Greg and Nancy Forsythe Christian Giving Fund
Heritage Quilters Fund
Hilary and Margaret Raab Fund
Howard Wise Endowment Fund
Jack & Diane Kemp Endowment Fund
Jeff and Linda Bryner Unrestricted Endowment Fund

Jim and Betty McDonald Endowment Fund
Jim and Kim Larsen Unrestricted Endowment Fund
Jimmy & Marian Hooseline Family Trust
Joe and Marian Jollief Unrestricted Endowment
John & Ann Barney Unrestricted Endowment Fund
John & Diane Burrell Family Endowment Fund
John and Maureen Rogers Unrestricted Endowment Fund
John Dockus Unrestricted Endowment Fund
Jon and Cindy Harts Family Endowment Fund
Joseph K. Beckman Unrestricted Endowment Fund
Joseph L. and Maribel C. Costin Family Endowment Fund
Karen & Cornel Raab Unrestricted Endowment Fund
Karl F. Seger Endowment Fund
Letz Family Endowment Fund
Marge and Hugo Breuckman Fund
Marie Van Slyke Bean Endowment Fund
Mary and David Root Endowment Fund
Michael and Sherron Pampalone Endowment Fund
Otto Richard Fifield Memorial Endowment Fund
Peter & Betty Kolodziej Memorial Endowment Fund
Purdue Federal Credit Union Endowment Fund
Richard and Laura Sauerman Unrestricted Endowment Fund
Richard J. and Gwendolyn L. Buehler Endowment Fund
Robert and Joyce Nutt Unrestricted Endowment Fund
Robert W. and Karen J. Lynn Family Endowment Fund
Rouge Family Endowment Fund
Russell C. Westphal Family Memorial Fund
Schroeder Family Fund
Theodore L. and Tennessee E. Sendak Family Endowment Fund
Thomas H. Durant Endowment Fund
Tom and Kathy Liss Unrestricted Endowment Fund
Vern and Jeanne Segert Endowment Fund
Violet and Irvin Guritz Endowment Fund
Wellman Family Endowment Fund
White Family Fund
William and Maxie Scott Endowment Fund
William G. and Phyllis M. Fatch Fund

INTERESTED
IN ESTABLISHING
YOUR OWN
NAMED
UNRESTRICTED
FUND?

CONTACT US TODAY!
219-662-7252



volunteer FAIR

CONNECTING
NONPROFITS
WITH VOLUNTEERS



PHOTOS CLOCKWISE FROM LEFT: KATIE SLY (LEFT), CPCF PROGRAM & ENGAGEMENT OFFICER AND CPCF BOARD MEMBER CHRISANNE CHRIST (RIGHT) VISIT 15TH YEAR PARTICIPANT ST. JUDE HOUSE / G.A.P. FOOD PANTRY SHARES INFORMATION WITH ATTENDEES / SANDRA NOE-BRACCOLINO DONATES BLOOD AT THE VOLUNTEER FAIR & BLOOD DRIVE / ROCKPELLI REPRESENTATIVE CONNECTS WITH A VOLUNTEER.

VOLUNTEER FAIR REACHES MILESTONE 15 Years of Connecting the Community

The Crown Point Community Foundation proudly hosted the 15th Annual Volunteer Fair & Blood Drive, upholding its commitment to community connection. This year's event brought together a diverse array of nonprofits and engaged hundreds of potential volunteers eager to explore meaningful opportunities and connect with local organizations—all in one accessible, welcoming location.

In honor of the Volunteer Fair's 15th anniversary, the Crown Point Community Foundation awarded six grants for \$2,500 each to randomly-selected participating organizations at the conclusion of the Fair. This was an increase from the \$1,000 grants that are normally awarded.

Over 50 nonprofits from throughout Lake County attended the event, with some of them having participated in each of its fifteen years, including the following nonprofits: The City of Crown Point, Old Sheriff's House Foundation, St. Jude House, and Meals on Wheels NWI.

Congratulations to this year's grant winners: ANEW Ministries, Feline Community Network, Franciscan Health Crown Point, Girls on the Run Northwest Indiana, Meals on Wheels of NWI, and Planting Possibilities.

"The City of Crown Point is proud to have such a strong partnership with the Crown Point Community Foundation," said Crown Point Mayor Pete Land. "It is hard to believe we have attended the Volunteer Fair for nearly two decades. The Foundation lives and breathes our motto, 'Building a Stronger Community from Within,' and events like the Volunteer Fair do just that. We look forward to our continued partnership with the Foundation, its leaders and beneficiaries."

"The Fair helps to bring awareness to dedicated nonprofit organizations in our local communities that make a difference each and every day," said Mary Nielsen, Crown Point Community Foundation President. "We are thrilled to reach another milestone by celebrating our 15th anniversary of hosting the Fair."



CLOCKWISE FROM TOP LEFT: CPCF GRANT RECIPIENTS POSE WITH MARY NIELSEN, PRESIDENT OF THE CROWN POINT COMMUNITY FOUNDATION AND CROWN POINT COMMUNITY FOUNDATION BOARD MEMBERS. FROM LEFT TO RIGHT: JENNIFER LINSLEY, CPCF BOARD MEMBER - INDIRA BRIGHAM, CPCF BOARD MEMBER - KATHLEEN RUDASKI, MANAGER VOLUNTEER SERVICES OF FRANCISCAN HEALTH CROWN POINT - GREG FORSYTHE, CPCF BOARD MEMBER - ANGELINA TORES SOLIK, VOLUNTEER MANAGER OF MEALS ON WHEELS - DANIEL ROOT, CPCF BOARD MEMBER - SANDRA NOE-BRACCOLINO, MEALS ON WHEELS CHIEF EXECUTIVE OFFICER - DAN DUNCAN, CPCF BOARD MEMBER - JACQUELINE WEBER, DEVELOPMENT DIRECTOR OF GIRLS ON THE RUN NORTHWEST INDIANA - COREY LISS, CPCF BOARD MEMBER - MARY ANNE NEINER, PRESIDENT OF PLANTING POSSIBILITIES - MIKE DEXTER, CPCF CHAIRMAN OF THE BOARD - KEN SAKO, VOLUNTEER AT FELINE COMMUNITY NETWORK - JANELL ROTTIER, EXECUTIVE DIRECTOR OF ANEW MINISTRIES - KATIE SLY, CPCF PROGRAM & ENGAGEMENT OFFICER, AND MARY NIELSEN, CPCF PRESIDENT / ERIN'S FARM SHARES INFORMATION WITH VISITORS / CITY OF CROWN POINT DISPLAYING THEIR 15TH YEAR PARTICIPANT FRAME AND BALLOON / 15TH YEAR PARTICIPANT MEALS ON WHEELS OF NWI / ATTENDEE VISITS THE GOLDEN HOPE MINISTRIES BOOTH / VOLUNTEERS ENJOY THEIR TIME WITH THE EXCEPTIONAL EQUESTRIANS UNLIMITED REPRESENTATIVES.

"Feline Community Network experienced another successful engagement at the Crown Point Community Foundation Volunteer Fair," stated Ashlee Duca, Office Manager at Feline Community Network. "The event facilitated valuable connections with numerous new volunteers who share a passion for animal welfare, contributing significantly to our mission. We were delighted to be chosen as one of this year's grant recipients at the Fair, allowing us to continue our efforts in providing essential care to the cats under our care. As a nonprofit organization, grants such as these provide invaluable assistance to our cause."

"The Volunteer Fair has proven over its 15 years of service that it is a valuable resource for connecting potential volunteers with charitable organizations that can benefit from the volunteer services of community-minded people," said CPCF Board Member Daniel Root.

"We are very grateful to have been chosen as a grant recipient at this event," said Mary Anne Neiner, President at Planting Possibilities. "We will soon be starting a new job skills training program for adults with autism and other developmental disabilities at the new YMCA Camp Triangle Hills in Crown Point. We will apply this grant money to some unexpected expenses for that project."

"We were so thrilled to be chosen at the Volunteer Fair for a grant and will be using it toward our program development of incorporating support systems for our moms from reliable transportation to long term, sustainable careers," said Janell Rottier, Executive Director at ANEW Ministries. "This will be incredibly beneficial for the moms we have the honor to walk alongside towards gaining self-sufficiency, thank you!"

The Volunteer Fair is amazing," said CPCF Board Member Corey Liss. "It offers so many opportunities to get involved in our community to really make a difference in the lives of others."

In addition to the Volunteer Fair, there was an onsite Blood Drive conducted by Versiti Blood Centers. The Blood Drive collected 6 units that will potentially help up to 18 patients in need.

The Crown Point Community Foundation would like to thank all of the nonprofits who attended as well as the potential volunteers and blood donors. We would also like to thank the Crown Point Community School Corporation, LAMAR, The Times Newspaper, the Crown Point High School Theatre Boosters, Versiti Blood Centers, and the CPCF Board of Directors for helping to make this event possible.



KALLIOPi SAKALEROS AND RILEY MCQUAID WERE AWARDED THE 2024 DEAN AND BARBARA WHITE SCHOLARSHIPS - SHOWN WITH MARY NIELSEN, PRESIDENT OF THE CROWN POINT COMMUNITY FOUNDATION (ON RIGHT) AND KATIE SLY, CPCF PROGRAM & ENGAGEMENT OFFICER (ON LEFT).



AS I PURSUE A MINISTRY DEGREE, THROUGH THE RESOURCES PROVIDED BY THIS SCHOLARSHIP, I WILL BE EQUIPPED WITH THE TOOLS TO MAKE A POSITIVE IMPACT ON PEOPLE WITHIN MY COMMUNITY.

ELAINA LAGOS
CHARLES M. & MARJORIE QUICKLE MEMORIAL SCHOLARSHIP RECIPIENT

2024 SCHOLARSHIP WINNERS

The inaugural Crown Point Community Foundation Scholarship Awards Night was held on April 23rd at the Halls of St. George. The event brought together scholarship recipients, including graduating high school students, current college/trade school students, and non-traditional/adult learners, and their families to celebrate their outstanding achievements as they embark on a journey filled with growth and opportunity.

The Crown Point Community Foundation (CPCF) is proud to continue its tradition of helping to make higher education possible for local scholars. The Foundation awarded 116 scholarship awards to 91 students, totaling \$476,905. The scholarships included eight awarded by Crown Point Tri Kappa (six for current high school students and two for non-traditional/adult learners).

“Establishing a scholarship fund at the Crown Point Community Foundation allows donors to invest in the future of our community,” said Mary Nielsen, CPCF President. “We are delighted to offer opportunities to so many deserving students of all ages and academic pursuits.”

“I felt privileged and honored to once again be involved in the CPCF scholarship night,” said CPCF Board Member Dean Jones. “The evening was fantastic and experiencing it with the deserving students & families gives me a first-hand glimpse of an important role the Foundation plays in our community. You really get to see the results of the hard work and dedication these talented students have put forth.”

“This scholarship genuinely motivates me to continue doing my best work and to challenge myself,” said Kalliopi Sakaleros, who was one of the recipients of the Dean and Barbara White Scholarship. “I have always been told that hard work does not go unnoticed, and this scholarship has really proven that to me. All of the sleepless nights and endless hours of studying were entirely worth it.”

Each year, the CPCF Scholarship Committee (made up of community volunteers) reviews applications, interviews students and selects the recipients. Scholarships are awarded through special funds that have been established at the Foundation by generous donors in the community. Many scholarship funds are established with the purpose of honoring or memorializing an individual or family member.

We are grateful to our Community Partner, the Halls of St. George, for generously hosting this special evening; our Platinum Sponsor, Strack & Van Till; Silver Sponsors, Gigi’s Bake Shoppe, Puntillo & Crane Orthodontics, SLP Commercial & Janitorial Services, and Southlake Auto; and our Bronze Sponsors, Levin Tire & Service Center, CP Coworking, Tri Kappa of Crown Point, Alex Nickla and The Nickla Group, and LGS Plumbing, Inc. Their support, along with that from Twisted Sugar, The Party Girl Charcuterie, Albanese Candy, Cake Pop Craze by Mallory, and John Bir Photography, was instrumental in making this event a success!

For more information about the CPCF scholarship program, please visit www.thecpcf.org.

I AM HONORED AND EXTREMELY GRATEFUL THAT I HAVE BEEN CHOSEN AS A RECIPIENT OF THESE SCHOLARSHIPS. IT WILL GREATLY HELP ME AS I CONTINUE MY EDUCATION ON MY PATH TO MEDICINE. PUTTING ONE'S TRUST IN THE YOUTH THAT WE WILL CONTINUE THEIR LEGACY, DOING GREAT THINGS IN THIS WORLD IS NOT ONLY HUMBLING BUT GIVES ME HOPE FOR A BRIGHTER FUTURE THAT WE TOO CAN MAKE A DIFFERENCE.

ZACH BROOKS

KAREN & CORNEL RAAB SCHOLARSHIP RECIPIENT AND JOSEPH N. & ANNETTE M. ALLEGRETTI SCHOLARSHIP RECIPIENT



THE INAUGURAL CPCF SCHOLARSHIP AWARDS NIGHT, AT THE HALLS OF ST. GEORGE, BROUGHT TOGETHER 70 EXCEPTIONAL SCHOLARS AND THEIR FAMILIES TO CELEBRATE THEIR OUTSTANDING ACHIEVEMENTS AS THEY EMBARK ON A JOURNEY FILLED WITH GROWTH AND OPPORTUNITY.



CAELYN THIEL, GIL AND GAIL STIENER FAMILY SCHOLARSHIP RECIPIENT WITH CPCF BOARD MEMBER INDIRA BRIGHAM.

I THINK THAT IT IS AMAZING THAT PEOPLE IN OUR COMMUNITY ARE HELPING TO CREATE AND SET UP SCHOLARSHIPS FOR STUDENTS BECAUSE THERE ARE SO MANY STUDENTS OUT THERE THAT HAVE LESS OPPORTUNITIES JUST BECAUSE OF AFFORDABILITY AND THE SCHOLARSHIPS CAN GET MANY MORE STUDENTS CLOSER TO THEIR GOALS.

SIENNA RIDGLEY

SHIRLEY MUDY SCHOLARSHIP RECIPIENT

THIS YEAR'S SCHOLARSHIP RECIPIENTS ARE AS FOLLOWS:

Scholarship

Alec Matalin Memorial "Dope" Scholarship
 Alfred J. Gruber Senior Social Studies Honorarium
 American Italian Benevolent Society Scholarship
 American Italian Benevolent Society Scholarship
 American Italian Benevolent Society Scholarship
 American Italian Benevolent Society Scholarship
 American Italian Benevolent Society Scholarship
 American Italian Benevolent Society Scholarship
 Barbara Jenkins Tyler Speech Scholarship
 Barney Family Scholarship
 Barney's Hub Bootery Scholarship
 Bryan C. Niedert Memorial Scholarship
 Bryan C. Niedert Memorial Scholarship
 Bryan C. Niedert Memorial Scholarship
 Bryan C. Niedert Memorial Scholarship
 Burrell Family Scholarship
 Burrell Family Scholarship
 Candace Lynne Walton Scholarship
 Charles M. & Marjorie Quickle Memorial Scholarship
 Charles M. & Marjorie Quickle Memorial Scholarship
 Christopher Day Memorial Scholarship
 Clayton Gaudry Memorial Scholarship
 Colonel John Wheeler Middle School Scholarship
 CPCF - Women's Giving Circle Scholarship
 Crown Point Community Foundation Scholarship
 Crown Point Community Foundation Scholarship

Name of Recipient

Evan Ballou
 Sarah Leitzel
 Christopher Marlow
 Kathleen Pampalone
 Tanner Pavicich
 Vincent Pisano
 Jacob Roytan
 Myles Querimit
 Josephine Nelson
 Isabella Sevenz-Coleman
 Abigail Foster
 Lorain Goetz
 Kristen Kiszenia
 Ethan Sauter
 Madison Paulauski
 Julianna Rush
 Colton Neal
 Elaina Lagos
 Nathan Terry
 Ryan Smith
 Luke Sargent
 Chelsea Droza-Tants
 Jennifer Reissman
 Lydia Byrd
 Caroline Donaldson

Amount

\$ 5,000
 \$ 1,325
 \$ 1,850
 \$ 1,850
 \$ 1,850
 \$ 1,850
 \$ 1,850
 \$ 1,150
 \$ up to 5,000 per sem. for 8 sems.
 \$ 2,690 per yr for 3 yrs.
 \$ 2,500
 \$ 2,500
 \$ 2,500
 \$ 2,500
 \$ 2,750
 \$ 2,750
 \$ 1,165
 \$ 3,200
 \$ 3,200
 \$ 600
 \$ 2,500
 \$ 1,000
 \$ 2,500
 \$ 2,500
 \$ 2,500



<

THIS SCHOLARSHIP IS IMPORTANT TO ME BECAUSE IT GIVES ME AN OPPORTUNITY TO CARRY ON THE LEGACY OF ALEC MATALIN, WHO'S LIFE WAS UNFORTUNATELY CUT SHORT. I WANT TO DO MY BEST TO HONOR HIM.

EVAN BALLOU
ALEC MATALIN MEMORIAL "DOPE" SCHOLARSHIP RECIPIENT



SIDNEY SMITH, CROWN POINT YOUTH BASEBALL SCHOLARSHIP RECIPIENT CELEBRATES WITH FAMILY MEMBERS.



RACHEL MAGTIRA, WALKS TOWARDS THE STAGE TO ACCEPT THE DR. J. ROBERT MAYDEN MEMORIAL SCHOLARSHIP.



<

I AM BEYOND GRATEFUL FOR BEING THE CROWN POINT COMMUNITY FOUNDATION SCHOLARSHIP RECIPIENT. THANK YOU TO THE PEOPLE WHO BELIEVE IN MY ACADEMIC FUTURE AND WANT TO HELP ME ACHIEVE MY GOALS.

ANDRIA MURRY
CROWN POINT COMMUNITY FOUNDATION SCHOLARSHIP RECIPIENT

Scholarship

- Crown Point Community Foundation Scholarship
- Crown Point Community Foundation Scholarship
- Crown Point Community Foundation Scholarship
- Crown Point Community Foundation Scholarship
- Crown Point Lions Club Scholarship
- Crown Point Swim Club Alumni Scholarship
- Crown Point Youth Baseball Scholarship
- Crown Point Youth Baseball Scholarship
- David Gergely Memorial Scholarship
- Dean and Barbara White Scholarship
- Dean and Barbara White Scholarship
- Donald and Phyllis (Dillabaugh) Ross Purdue Scholarship
- Donald and Phyllis (Dillabaugh) Ross Purdue Scholarship
- Dr. J. Robert Mayden Memorial Scholarship
- Dr. James W. Gentleman Memorial Scholarship
- Dwight D. Eisenhower Elementary PTO Scholarship
- George Letz III Memorial Scholarship
- Gil and Gail Stiener Family Scholarship
- Helen Zielinski & Ray Stuck Family Scholarship
- Jerry A. Caravana Athletic Director Scholarship
- Jerry A. Caravana Athletic Director Scholarship
- Jerry Ross Elementary PTO Scholarship
- JoAnne and Jim Haag Scholarship
- John D. Amodeo Scholarship
- John D. Amodeo Scholarship
- Joseph & Evelyn Skora Memorial Scholarship
- Joseph N. and Annette M. Allegretti Scholarship
- Karen & Cornel Raab Scholarship
- Karen Pruzin Scholarship

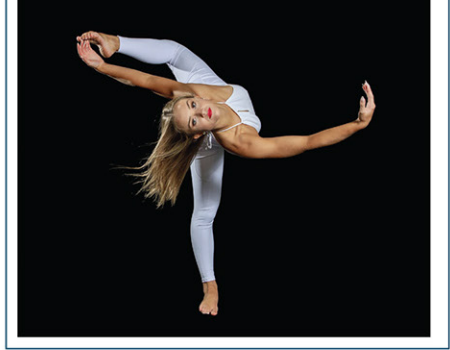
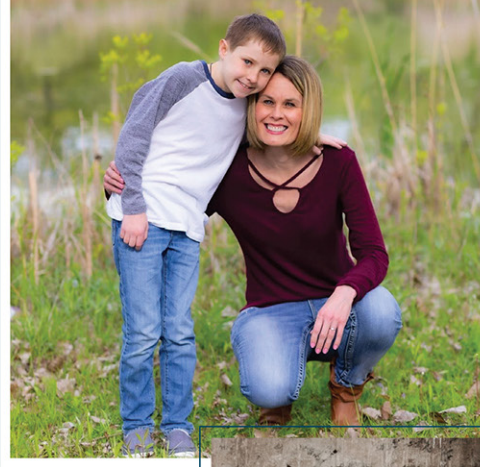
Name of Recipient

Name of Recipient	Amount
Sara Kamp-Austin	\$ 2,500
Gabriella Morache	\$ 2,500
Andria Murry	\$ 2,500
Therese Priesol	\$ 2,500
Caitlin Ashby	\$ 1,000
Nikolai Petkov	\$ 5,000 per yr for 4 yrs.
Jackson Fronek	\$ 1,000
Sidney Smith	\$ 1,000
Elsie Kiran	\$ 600
Riley McQuaid	Full Scholarship - 8 sems. Tuition, Room & Board
Kalliopi Sakaleros	Full Scholarship - 8 sems. Tuition, Room & Board
Allie Hopkins	\$ 3,000
William Sherman	\$ 3,000
Rachel Magtira	\$ 2,500
Bella Lamparski	\$ 2,500
Megan Szpak	\$ 500
Elsie Kiran	\$ 2,500
Caelyn Thiel	\$ 2,980
Abigail Edwards	\$ 1,500
Lilia Hacker	\$ 1,300
Jeffrey Meschede	\$ 1,300
Jude Anderson	\$ 1,000
Clark Noble	\$ 2,225
Elise Depta	\$ 1,000
Alyson Foster	\$ 1,000
Jacob Huppenthal	\$ 3,200
Zach Brooks	\$ 1,000
Zach Brooks	\$ 2,700
Emma Charles	\$ 2,000

>
 BEING RECOGNIZED FOR THIS GIFT AS AN ADULT LEARNER HAS GIVEN ME AN EXTRA DOSE OF ENCOURAGEMENT TO TAKE THE NEXT STEP FORWARD TOWARDS BECOMING A NURSE.

SARA KAMP-AUSTIN

CROWN POINT COMMUNITY FOUNDATION SCHOLARSHIP RECIPIENT AND TRI KAPPA - SUE CRISMAN MEMORIAL SCHOLARSHIP RECIPIENT



^
 THE BURRELL SCHOLARSHIP MEANS I AM ONE STEP CLOSER TO MAKING MY DREAM OF BECOMING A PROFESSIONAL DANCER, CHOREOGRAPHER AND FUTURE STUDIO OWNER COME TRUE.

MADISON PAULAUSKI
 BURRELL FAMILY SCHOLARSHIP RECIPIENT



JOSEPHINE NELSON, BARNEY FAMILY SCHOLARSHIP RECIPIENT WITH CPCF PROGRAM & ENGAGEMENT OFFICER KATIE SLY AND CPCF PRESIDENT MARY NIELSEN.



<
 BEYOND FINANCIAL AID, THIS SCHOLARSHIP WILL PROVIDE ME WITH THE CONFIDENCE AND ENCOURAGEMENT TO PURSUE MY DREAMS IN COMPUTER ENGINEERING.

AUSTIN GUERRERO
 WINFIELD ELEMENTARY PTO SCHOLARSHIP RECIPIENT

Scholarship

- Karen Pruzin Scholarship
- Kathy, Russ and Jim Keller Scholarship
- Kay Hubbard Music Scholarship
- L. Jane Keene Memorial Scholarship
- Lake Street Elementary PTO Scholarship
- Lisa Schaefer Stover Scholarship
- Liss CARSTAR Scholarship
- MacArthur Elementary PTO Scholarship
- Manhart/Gibbons Family Memorial Scholarship
- Marie Van Slyke Scholarship
- Marilee Thanholdt Memorial Scholarship
- Marion Kellum Performing Arts Scholarship
- Marion Kellum Performing Arts Scholarship
- Marion Kellum Performing Arts Scholarship
- Marion Kellum Performing Arts Scholarship
- Mark and Lindsay Bates Scholarship
- Mark Edwards Memorial Scholarship
- Marty Shahbaz Football Scholarship
- Mary Gregory Geimer Memorial Scholarship
- Maurine Schlemmer Memorial Scholarship
- McMichael Family Scholarship
- Mike Brown, Jr. Memorial Scholarship
- Mike Brown, Jr. Memorial Scholarship
- Millicent & Forrest Everett Memorial Scholarship
- Paul and Dorothea Everett Scholarship
- Pete Breuckman Sr. Tradesman Scholarship
- Pete Breuckman Sr. Tradesman Scholarship
- Pettit Family Memorial Student Athlete Scholarship
- Ralph E. and Dee Bennett Scholarship

Name of Recipient

Name of Recipient	Amount
Preston Matthyse	\$ 2,000
Sarah Hill	\$ 800
Rachel Magtira	\$ 2,000
Dimitri Zaronias	\$ 760
MaryClare McConnell	\$ 500
Grace DeVine	\$ 1,630
Ethan Ogrentz	\$ 1,500
Lillian Caddick	\$ 1,000
Samantha Zivkovich	\$ 3,055 per yr for 4 yrs.
Andrew Panozzo	\$ 500
Madeline Thunberg	\$ 2,540
Zander Abraham	\$ 1,000
Ella Moon	\$ 1,000
Julianna Rush	\$ 1,000
Samantha Zivkovich	\$ 1,000
Zander Abraham	\$ 1,000
Scott Ballentine	\$ 750
Seamus Malaski	\$ 1,525
Jocelyn Mollet	\$ 2,500
Tanner Pavicich	\$ 600
Clarita Mabon	\$ 1,435
Jude Anderson	\$ 2,650
Samantha Walden	\$ 2,650
Sarah Hill	\$ 730
Allie Hopkins	\$ 1,780
Trent Hurysz	\$ 2,500
Ethan Sauter	\$ 2,500
Seamus Malaski	\$ 2,500
Jackson Saliwonczyk	\$ 1,085



PHOTO BY BOB STREMPKA



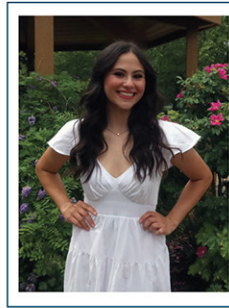
CPCF WOMEN'S GIVING CIRCLE SCHOLARSHIP RECIPIENT JENNIFER REISSMAN CELEBRATES WITH HER FAMILY.



^
 THESE SCHOLARSHIPS PROVIDE ME WITH THE CONFIDENCE THAT I AM WORTHY OF SUCH AN HONOR TO RECEIVE THIS RECOGNITION IN MR. CARAVANA'S AND MR. BERNACKI'S NAME.

JEFFREY MESCHEDA

JERRY A. CARAVANA ATHLETIC DIRECTOR SCHOLARSHIP RECIPIENT AND WALTER J. BERNACKI MEMORIAL SCHOLARSHIP RECIPIENT



<
 THIS WILL ALLOW ME TO CONTINUE TO TRANSCEND AS A WOMAN AND HAVE THE OPPORTUNITY TO GO TO AN ALL WOMEN'S COLLEGE WITH THE HELP OF THIS SCHOLARSHIP.

ISABELLA GONZALEZ

VIRGIL A. PLACE SCHOLARSHIP RECIPIENT

Scholarship

- Robert "Bob" Brown Scholarship
- Robert Taft Middle School PTO Scholarship
- Robert Taft Middle School PTO Scholarship
- Ronald & Suzanne Borto Scholarship
- Russ Keller Family Scholarship
- Shirley Mudy Scholarship
- Shirley Mudy Scholarship
- Solon Robinson Elementary School PTO Scholarship
- Solon Robinson Elementary School PTO Scholarship
- St. Mary's Catholic Community School Scholarship
- St. Mary's Catholic Community School Scholarship
- Tim Galusha Memorial Scholarship
- Timothy Ball Elementary PTO Scholarship
- "Tiny" Knesek Bohling and Karla Stiener Scholarship
- Todd Szanyi Memorial Scholarship
- Tri Kappa - Sue Crisman Memorial Scholarship
- Tri Kappa - Women's Giving Circle Scholarship
- Tri Kappa Scholarship
- Tri Kappa Scholarship
- Tri Kappa Scholarship
- Tri Kappa Scholarship
- Tri Kappa Scholarship
- Trinity Lutheran School PTL Scholarship
- Trinity Lutheran School PTL Scholarship
- Trinity Lutheran School PTL Scholarship
- Virgil A. Place Scholarship
- Walter J. Bernacki Memorial Scholarship
- Wilbert Buth Music Scholarship
- Wilbert Buth Music Scholarship
- William G. & Phyllis M. Fatch Scholarship
- Winfield Elementary PTO Scholarship
- Youche Country Club Scholarship
- Zondor Family Scholarship

Name of Recipient

Amount

Clayton Walden	\$	570
Addison Kiran	\$	1,285
Olivia O'Keefe	\$	1,285
Therese Priesol	\$	700
Sarah Leitzel	\$	2,000 & parallel scholarship from IU Foundation
Makenzie Keever	\$	1,000
Sienna Ridgley	\$	1,000
Michael Lee	\$	500
Alyssa Petersen	\$	500
Rae Holok	\$	1,000
William Mouser	\$	1,000
Nolan Ferrell	\$	4,000
Eva Obetkovski	\$	500 per yr for 4 yrs.
Luke Sargent	\$	940
Emmi Doty	\$	585
Sara Kamp-Austin	\$	1,000
Madison Donofrio	\$	1,000
Jude Anderson	\$	2,000
Chelsea Droza-Tants	\$	2,000
Reilly Lustina	\$	2,000
MaryClare McConnell	\$	2,000
Lea Nikolov	\$	2,000
Emily Gardiner	\$	750
Andrew Ives	\$	750
Brayden Shea	\$	750
Isabella Gonzalez	\$	3,950 per yr for 4 yrs.
Jeffrey Meschede	\$	500
Andrew Ives	\$	1,000
Brayden Shea	\$	1,000
Tanner Pavicich	\$	555
Austin Guerrero	\$	1,000
Reilly Lustina	\$	750
Scott Ballentine	\$	1,765

<

THIS SCHOLARSHIP SHOWS THAT SOMEONE OUT THERE BELIEVES IN ME AS A STUDENT AND A PERSON, AND THAT GIVES ME CONFIDENCE FOR THIS NEXT STEP.

LUKE SARGENT

CLAYTON GAUDRY MEMORIAL SCHOLARSHIP RECIPIENT AND "TINY" KNESEK BOHLING AND KARLA STIENER SCHOLARSHIP RECIPIENT



SARAH LEITZEL, RUSS KELLER FAMILY SCHOLARSHIP RECIPIENT WITH CPCF BOARD MEMBER BEN BALLOU AND SCHOLARSHIP FUND HOLDER PAULA KELLER.

UNIVERSAL SCHOLARSHIP APPLICATION OPENS JANUARY 2025

2025 Universal Scholarship Application Opens January 1, 2025 for Graduating High School Students, College Students and Adult Learners.

Apply online beginning January 1, 2025 by following the link on our website, www.thecpcf.org. Deadline for applications will be Saturday, March 1, 2025.



HELP US LEAD, ENGAGE AND ENRICH OUR COMMUNITY



WHY WE GIVE: As a community bank, we're committed to public service, and we've made it our business to be on top of and involved in what is happening locally. It's a tradition that employees of Peoples Bank have embraced for more than 100 years. Every day, we help keep our customers' finances moving forward by using local knowledge to deliver high-quality services and products to suit their unique needs. With that same dedication, we help move our communities forward by finding creative ways to provide support to the many organizations that approach us for assistance.

MISSION: Since 1910, Peoples Bank has maintained a commitment to helping our customers and communities thrive. We strive to be a value-driven Bank for all of our stakeholders and focus on bringing capital back to the communities we serve. At Peoples, it's our commitment to offer the best service that our customers can find through engagement and technologies that will enhance the customer experience.



< **Crossroads YMCA 2024:** The Community First Committee presents a donation of \$1,500 to our friends at Crossroads YMCA.

> **Rockopelli:** Peoples Bank volunteers jam to music and hand out giveaways as they work a table at the Rockopelli Music Festival at Bulldog Park in Crown Point.



> **Food Bank Mobile Market:** A group of Peoples Bank managers and a few family members volunteer at a Food Bank of Northwest Indiana Mobile Market in Highland—one of several Mobile Markets on their schedule, providing food to local families in need.



www.ibankpeoples.com



PHOTOS CLOCKWISE FROM TOP LEFT: EXECUTIVE BOARD MEMBER GINA AVILA AND BOARD SECRETARY AMBER ZIMMER OF NWI FOOD COUNCIL AND COMMUNITY WELLNESS COORDINATOR AT PURDUE EXTENSION ENJOY THE WORKSHOP - INTRODUCTION TO EFFECTIVE DIGITAL FUNDRAISING, HELD AT THE CROWN POINT COMMUNITY PUBLIC LIBRARY / JEREMY R. MELF, LAKE COUNTY AREA DIRECTOR AT YOUTH FOR CHRIST SHARES HIS INSIGHTS DURING A TRAINING SESSION / ATTENDEES ACTIVELY PARTICIPATE ALONGSIDE FACILITATOR MEGAN BENNETT, OWNER AND DIGITAL STRATEGIST AT SOCIALLY ACCEPTABLE / DURING THE WORKSHOP, FACILITATOR MEGAN BENNETT ENGAGES IN CONVERSATION WITH NICOLE YARROW, THE EXECUTIVE DIRECTOR OF THE NORTHWEST INDIANA CANCER KIDS FOUNDATION, INC. / ATTENDEES OF THE NONPROFIT ACADEMY WORKSHOP GATHER FOR A PHOTO OPPORTUNITY WITH MARY NIELSEN, PRESIDENT OF THE CPCF, KATIE SLY, CPCF PROGRAM & ENGAGEMENT OFFICER, AND ALEXIUS BARBER, PUBLIC AFFAIRS AND ECONOMIC DEVELOPMENT MANAGER AT NIPSCO / (FROM LEFT) KATIE SLY, ALEXIUS BARBER, AND MARY NIELSEN.

EMPOWERING NONPROFIT LEADERS

The Nonprofit Academy Drives Professional Growth



The Crown Point Community Foundation launched its highly anticipated Nonprofit Academy, sparking a new era of professional development for the nonprofit sector.

The inaugural workshop on Digital Fundraising, in collaboration with The Fund Raising School at the IU Lilly Family School of Philanthropy, brought together 27 dedicated professionals from a variety of organizations, all eager to enhance their digital fundraising skills and impact. The second workshop on Fundraising from Foundations & Grant Management, facilitated by The Fund Raising School at the IU Lilly Family School of Philanthropy, brought together 29 professionals, all striving to elevate their fundraising strategies and maximize their impact.

"With the launch of the Nonprofit Academy, nonprofits have embraced new opportunities to learn, collaborate, and innovate

together, making this first year a huge success," said Katie Sly, CPCF Program & Engagement Officer. "The enthusiasm and strong turnout from professionals at all levels highlight just how essential these professional development opportunities are for strengthening the sector and empowering nonprofits to drive greater impact."

"Throughout the training, we were provided with invaluable insights and strategies that have already begun to reshape our approach to fundraising," said Matthew Lambert, Director of Development at Crossroads YMCA. "The structured framework presented during the sessions has given us a clear direction and helped us generate new ideas to enhance our fundraising efforts. One of the most significant takeaways from the training was the creation of a more realistic stewardship calendar. By implementing these strategies, we aim to be more effective and efficient in serving our community. This calendar will enable us to nurture stronger relationships with our



PHOTOS CLOCKWISE FROM TOP LEFT: ATTENDEES PARTICIPATE IN A GROUP TRAINING DURING THE WORKSHOP - FUNDRAISING FROM FOUNDATIONS & GRANT MANAGEMENT / ATTENDEES OF THE NONPROFIT ACADEMY WORKSHOP GATHER FOR A PHOTO OPPORTUNITY WITH MARY NIELSEN, PRESIDENT OF THE CPCF, AND KATIE SLY, CPCF PROGRAM & ENGAGEMENT OFFICER / WORKSHOP FACILITATOR, MS. ROBERTA (BOBBIE) L. DONAHUE, MBA, CFRE ADJUNCT FACULTY MEMBER AT INDIANA UNIVERSITY TALKS WITH JEFFREY PERZ, TREASURER AT EXCEPTIONAL EQUESTRIANS UNLIMITED / ASHLEY LUPTAK, DIRECTOR OF PHILANTHROPY AT BOYS & GIRLS CLUBS OF GREATER NORTHWEST INDIANA / ELAINE HEIN, CO-LEADER AT ST. MARY'S GOD'S GROCERIES FOOD PANTRY AND SUSAN J. MORENO, MARKETING COORDINATOR AT IN-PACT WORK TOGETHER DURING A SESSION / WORKSHOP GROUP DISCUSSION.

donors while ensuring that our fundraising efforts align with our mission and goals."

Thank you to everyone who supported this new initiative and helped make it a success, especially our Presenting Sponsor, the Dean and Barbara White Family Foundation; our Platinum Sponsor, NIPSCO; and additional support from the John & Ann Barney Family Foundation. Thanks also to the Crown Point Community Library for hosting these events and our CPCF Board of Directors for their unwavering commitment to our community. We look forward to driving further growth and impact in our community together!

"The NISOURCE Charitable Foundation and NIPSCO are excited to sponsor the Crown Point Community Foundation's inaugural Nonprofit Academy," said Alexius Barber, Public Affairs & Economic Development Manager at NIPSCO. "We realize the importance of equipping nonprofits with key essential tools that allow them to continue serving the community. It is partnerships such as this that play a major role in strengthening organizations' internal capacity while advancing their mission. We look forward to many of our nonprofits taking part and benefiting from the great resources provided through the Nonprofit Academy, facilitated by the IU Fund Raising School at the Lilly Family School of Philanthropy and other partners."

"The Nonprofit Academy is a phenomenal program," said Amy Wulf, Community Liaison at VNA Hospice NWI. "I love being able to learn from industry professionals as well as peers. I walked away with both practical advice that I could implement right away and pie in the sky grand ideas. I would highly recommend to anyone who is interested in bettering their nonprofit."

"Attending the grant writing workshop presented by the Crown Point Community Foundation was very enlightening for me," said Jeffrey Perz, Treasurer at Exceptional Equestrians Unlimited. "The workshop provided me with invaluable tips and techniques for crafting compelling grant proposals, including structuring our narratives and highlighting key metrics. The presenters offered practical insights into what funders are really looking for, making the daunting process of grant writing much more approachable."

NONPROFIT ACADEMY PARTNERS

PRESENTING SPONSOR:

**DEAN AND BARBARA WHITE
FAMILY FOUNDATION**

PLATINUM SPONSOR:



ADDITIONAL PARTNERS:

**JOHN & ANN BARNEY
FAMILY FOUNDATION**





Women's Giving CIRCLE

COLLECTIVE GRANTMAKING EVENT



PHOTOS CLOCKWISE FROM TOP LEFT: WOMEN'S GIVING CIRCLE MEMBERS (LEFT TO RIGHT): NIKOLINA SRBINOSKI, JULIE GARDNER, KAELYN MACUGA, AND KAREN DEXTER ENJOY THE EVENING AT THE EAST POINT VENUE ON TUESDAY, SEPTEMBER 10, 2024 / (LEFT TO RIGHT): NANCY LEAR; JULIE ZASADA; AND JENNIFER FRAZIER / (LEFT TO RIGHT): KATHY ROESER OF THE ROESER GROUP AT MORGAN STANLEY; CPCF PRESIDENT MARY NIELSEN; AND JANE NERNEY / (LEFT TO RIGHT): CAROL SANDERS; LAURA SMALL; AND JILL BECKHAM / (LEFT TO RIGHT): CAROL HIGHSMITH, KIMBERLY LARSEN, VICKY KLEIN, JUDY HARTZ SWECKO, AND JEANENE LETCHER / (LEFT TO RIGHT): DIANE REIMER; SUE RIESTER; AND SANDRA NOE-BRACCOLINO.

This year's Women's Giving Circle event continued its inspiring tradition of bringing women together to make a difference in the community.

The Women's Giving Circle, a collective giving initiative of the Crown Point Community Foundation, invites all women to join in supporting local causes. Through contributions of \$100 or more, members pool their donations, which can be made at any time throughout the year. At the annual event, held on the second Tuesday in September, attendees cast their votes to determine which nonprofits will receive grants. This meaningful gathering empowers women to actively participate in charitable giving and witness the direct impact of their generosity.

This year, the ladies donated an astonishing \$20,500!
They granted \$10,000 at the event. \$2,000 to each charity

receiving the most votes. In addition, \$2,500 will be used for a 2025 Women's Giving Circle Scholarship.

Another \$10,000 went to the CPCF Unrestricted Community Grantmaking Fund. This Fund provides grants to support community needs and programs three times each year through the grant process at the Foundation.

Attending the Women's Giving Circle is a favorite event of mine," said CPCF Board Member Chrisanne Christ. "It's like a family reunion, you get to see so many wonderful women and catch-up on life. Many bring a friend, so you are also meeting new women that share in the commitment to philanthropy. The event flies by so quickly because it is so fun!"

"New Leash On Life would like to express our heartfelt gratitude to

the Crown Point Community Foundation Women's Giving Circle for awarding us this wonderful grant," said Donna Pace, Founder/CEO, New Leash on Life. "Your support is a significant step toward making our vision of creating a pet adoption and resource center a reality. This grant will be used to design the entrance of the center, a welcoming space for both animals and the community. We are truly honored and thankful for your belief in our mission and your commitment to helping us make a difference."

"At the Women's Giving Circle Collective Grantmaking Event, women come together to build meaningful connections and gain valuable insight into our community's needs," said Mary Nielsen, President of the Crown Point Community Foundation. "We invite every woman in South Lake County to join us in experiencing the profound impact of collective giving. Together, we can create lasting change in the communities we cherish."

"We are thrilled to have received a grant from the CPCF Women's Giving Circle," expressed Lauren Zurbriggen, Director of Development, St. Jude House. "This grant will allow us to purchase new toddler beds and cribs that are much needed to provide safe sleeping areas to children residing in the shelter. Thank you for lending your support to St. Jude House and survivors!"

"We are so excited to be selected as a recipient, as this solidifies and encourages the impactful work that we are doing in our community," said Lauren Mauk, Board President at Mommy's Haven. "We work every day to bring life-changing impact to moms and their children in need, and this grant will further expand our services and the impact we're able to make. This grant will be impactful for our organization as it will go towards purchasing building materials needed to complete construction jobs inside the transitional house, to make each space more conducive to independent, multi-family living situations."

All the volunteers at Dunes Dog Training Club's Pets N Vets Program are very excited to be receiving a grant from Crown Point Community Foundation's Women's Giving Circle," said Jan Koutelas, Secretary of Dunes Dog Training Club, Inc. and Director of the Pets N Vets Program. "We are so glad to have your help in supporting our U.S. Military Veterans with PTSD and/or Traumatic Brain Injuries in their dog obedience training goals, which is accomplished at "no cost" to qualified Veterans. In the 12 years which our program has been in existence, we have served over 200 Veterans in the N.W. Indiana region, and we are continuing to serve many others with your support. Thank you from the bottom of our hearts!"

2024 GRANT RECIPIENTS

GRANT AMOUNT: \$2,000 EACH



WOMEN'S GIVING CIRCLE GRANT RECIPIENTS POSE WITH WGC'S SPONSOR AND CPCF PRESIDENT MARY NIELSEN. BACK ROW, PICTURED FROM LEFT TO RIGHT: CATHY HICKS, NEW LEASH ON LIFE VOLUNTEER; DONNA PACE, FOUNDER/CEO AT NEW LEASH ON LIFE; AMY MCCARTHY AND TERESA WALLACE, ST. JUDE HOUSE'S SURVIVOR COUNCIL; LAUREN ZURBRIGGEN, DIRECTOR OF DEVELOPMENT AT ST. JUDE HOUSE; BARBARA MUCKEL, DONOR RELATIONS MANAGER AT MOMMY'S HAVEN; LAUREN MAUK, BOARD PRESIDENT AT MOMMY'S HAVEN; CPCF PRESIDENT MARY NIELSEN; KATHY ROESER OF THE ROESER GROUP AT MORGAN STANLEY; CPCF BOARD MEMBERS PAMELA SEAMAN, CHRISANNE CHRIST AND INDIRA BRIGHAM. SEATED, PICTURED FROM LEFT TO RIGHT: EDEN KOENIG, RUTH ARGENTA, LINDSAY FROHNAPPLE, BETTE OESTERLE AND SUE RIESTER FROM COMMUNITY HELP NETWORK.

COMMUNITY HELP NETWORK
 DUNES DOG TRAINING CLUB (PETS N VETS)
 MOMMY'S HAVEN
 NEW LEASH ON LIFE
 ST. JUDE HOUSE

"We are so grateful to once again receive a grant from the WGC," said Bonnie J. Meyer, Executive Director at Community Help Network, Inc. "What a kind and generous group of women! This money will be used to help purchase food from the NWI Food Bank for our Buddy Bags. We have seen an increase of 100 students over the numbers for last school year. This equates to a weekly cost increase of \$500!"

"The Women's Giving Circle was an unforgettable evening filled with delicious food, inspiring camaraderie, and the chance to experience the powerful impact of our collective philanthropy firsthand," said CPCF Board Member Shannon Sheehy. "Congratulations to everyone who made this event so remarkable!"

The event, held at The East Point Venue, was sponsored by Jane Lambesis of Federated Hermes and Kathy Roeser of The Roeser Group at Morgan Stanley.

For more information about joining the Women's Giving Circle, visit www.thecpcf.org.

DONATIONS

NOVEMBER 1, 2023 - SEPTEMBER 30, 2024

A

360 Fit, LLC
Mary Ann Abraham
AHEPA Chapter No. 78 Charities Inc.,
Andrew Kyres
Jessica Pettit Albaugh
Joseph & Annette Allegretti
Trish Alt
Joseph & Lori Amodeo
Amodeo Properties, Rick & Cathy
Amodeo
Thomas & Kathryn Anderson
Linda Anderson
Jon & Monica Anderson

B

Arley Blair Insurance & Financial
Linda & Greg Armstrong
Assurant Global Automotive/
Assurant Foundation
Scott & Tracy Babjak
Frank Baccino
Michael Bafia
Irene Bairaktaris
Ben & Angela Ballou
Ballou Law, LLC
Jeffrey & Roxanne Ban
Matt & Sandy Bapple
Barney Family Foundation,
John & Ann Barney
John & Ann Barney
Mark & Lindsay Bates
David & Helen Batusic
Jon Beasley
David & Jill Beckham
Gerrie Beckman
Kelly Bermes
Mary Bernacki
Timothy Bianco
John & JoAnn Birdzell
Blade Cutters II, LLC
Ted Borggren &
Jacqueline Stuck Borggren
Bethany Borgo
Suzanne Borto
Sandra Noe Braccolino
William & Beverly Breyfogle
Dr. Gary & Indira Brigham

The Brist Family
Sam & Sheila Brune
Brett & Carol Burkholder
Donald & Alice Burrell

C

Juliana Caffarini
Caravana Living Trust
The Carmichael Family
Lynnie Ques,
Lynn Cartwright
Penelope Castor
Cedar Lake Girls Softball
Mark & Chrisanne Christ
City of Crown Point
Ryan & Linda Collier
Colonel John Wheeler PTA
Laurence & Susan Costin
Crown Point Cal Ripken Youth
Baseball
CP Coworking
Crown Point High School
Theatre Booster Association
James Crisman
Crown Brick & Supply, Inc.
Crown Point High School
Crown Point Lions Club, Inc.
Crown Point Rotary
Christine Curiel
Sharon Sondgerath Cyganowski
Joseph & Gayle Czarnik

D

D&D Napa
Andy Darling
Michael Daugherty &
Donna Sapone Daugherty
DCMM, Inc.
Dean & Barbara White
Family Foundation Inc.
Suzanne Demmond
Deny Machine Shop
Mike & Karen Dexter
Gordon & Mary Joan Dickson
John & Louise Diederich
Gary & Marie Dienes
Eric & Robin Dillon
Dan DiTola Insurance Inc.
John Dockus
Dr. Raymond & Donna Doherty
Douglas MacArthur PTO

Michelle Duffy
Dan & Alison Duncan

E

Mark & Mary Edwards
Eisenhower School PTO
Eley-Graham-Austgen
Financial Advisory Services
The Engine Room
Eythelbelle Hoffman Family Trust

F

W. E. Fairchild
Federated Hermes,
Jane Lambesis
First Financial Bank
William Forgey
Shirley Forney-Bates
Greg & Nancy Forsythe
Scott & Maureena Foster
Franciscan Alliance
George & Jacqueline Frank
Jennifer Frazier
Ronald & Marian Fricke
Friends of Emily

G

Greg Galusha
Julie Gardner
Jim Geimer
Gigi & George Geimer-Messler
Irene Gentleman
George C. Patrick & Assoc., P.C.
Timothy & Cheryl Gericke
Russ & Margie Gertsch
Gerry & Dawn Gora
Gregory & Diane Gordon
Dewayne Gray
Gregory & Kellie Bowers
Sharon Gremel
Cindy Grzych-VanVolkenburgh
Stephen & Letitia Gustas

H

Michael & Tracy Hadt
Cindy Hall
Matthew & Lisa Hanlon
Hanover Schools Education
Foundation

Crystal Harrigan-Barry
Harvey Nonprofit Consulting Group
Cathy Hicks
Steve & Carol Highsmith
Gregory & Rochelle Hoffman
Attorney Thomas Hoffman
Anna Holem
Collis Hooks
Robert & Louise Hooper
Chuck & Darlene Hopp
Arliiss Hove
BJ Hubbard
Donald & Joyce Huber
Huntington National Bank
James Hutton

I

John Isley

J

Nancy Jackson
Michael James
Jerry Ross PTO
John W. Anderson Foundation
Eric & Tara Johnston
Dean & Sara Jones
Josam Company

K

Judith Kaleta
Kappa Kappa Kappa, Inc.,
Gamma Theta Chapter
Janet Katich
Eli Katich
Brett Keeler
Delos & Karen Keene
Paula Keller
Dawn Kelly
Jack & Diane Kemp
Dawn Kepshire
Charles & Susan Kerr
Marge Kerr
Melissa Kerr
Kingdom Housing
Dan & Vicky Klein
Glenn Kohlmeyer
Tina Kotka

L

Lake Street School PTO
James & Esther Lambert
Mary Jo Lane
Jim & Kim Larsen
Gail Larson
Law Offices of Karl E. Hand, P.C.
Judith Lazar
Nancy Lear
Randy Leffelman
Legacy Foundation, Inc.
Angela Leimer
William Lepak
Steve & Kathy Lessner
Jeanene Letcher
Sharon Letz
Levin Tire Center of Crown Point, Inc.
Thomas Leyden
LGS Plumbing
Peggy Ligda
Roger & Mariellen Liggett
Lilly Endowment, Inc.
Jennifer Linsley
Corey & Charlotte Liss
Tom & Kathy Liss
Liss Body & Paint Center
Liss CARSTAR Collision Center, Inc.
Litehouse WFG Hobart, Inc.
Marko Lukic
Robert & Karen Lynn

M

Kaelyn Macuga
John Manis
Robert & Darlene Marchina
Suzie Matalin
Lauren & Joshua Mauk
Jay & Carrie Mayden
McAleer & Gall Dentistry
James & Phyllis McDonald
Janet McDonald
Helen McEntire
McMahon & Associates
Lisa McTighe
Joseph & Rosanne Michelini
Darryl & Pat Miller
Sharon Miller
Dean & Sara Jones,
Mirar Development

Alyssa & Alan Monix
Dawson & Brenda Morgan
Morgan Stanley, Kathy Roeser
Morse Realty & Consulting Services,
Kevin & Michele Morse
Barbara Gederian Muckel
Bonnie Muir
Thomas & Janet Murray
Kevin & Janel Myers

N

Joseph & Jane Nerney
The Nickla Group, LLC
Keith & Mary Nielsen
NiSource Charitable Foundation
Tom & Marie Novotny
Nicole Nowicki
Joyce Nutt

O

Diane O'Brien
Richard & Bette Oesterle

P

O'Reilly Auto Parts
Larry & Sandra Palmiter
Peoples Bank,
Ben Bochnowski
Jeffrey Perz
Pete & Sons Auto Repair, Inc.
Jack & Karin Pettit
Phil & Son Security
Faye Platt
Joseph E. Pope
Thomas G. Pruzin
Mark A. Psimos
Puntillo & Crane Orthodontics, PC

R

R. Bar & Grill
Beth Rechlicz
Diane & Jeff Reimer
Mark & Sue Riester
Robert & Barbara Bowers
Timothy Rodda
John & Kathleen Roeser
John & Maureen Rogers
Daniel & Carol Root

William Rosenbower
Brent Rosenbower
Jane Rouge Martin

S

Jaswinder S. Sahi
James Saksa
Joseph & Carol Sanders
Deanne K. Sasser
Dick & Laura Sauerman
Alvin & Kathryn Schmidt
Bridget Schroeder
Robert & Karen Schrum
Maxie Scott
Pamela & John Seaman
Semko Law Office, LLC
Peg Shaffer
Sheehy Well & Pump Co., Inc.
Shannon Sheehy
Vic & Jewell Sheldon
Josh & Melissa Sickinger
Site Restoration Services,
Mark & Chrisanne Christ
SLP Comercial & Janitorial,
Sara Ybarra-Jimenez
Laura Small
Solon Robinson PTO
Tammie & Philip Sopczak
South Lake Medical Realty, LLC
Southlake Kia
Nikki Srbinoski
Allen & Linda Sredzinski
St. Anthony Home
St. Mary Home & School Association
Mary Steele
Thomas P. Stefaniak
Sandra Stevens
Gilbert & Gail Stiener
Vicki Stojkovich
Strack & VanTil Charity
Foundation, Inc.
R. Steven Sutton
Richard Sweeko &
Judy Hartz Sweeko

T

Suzanne Teesdale
William Thesing
Brett Thompson

Timothy Ball Elementary PTO
To-A-Tea Corp/Little Italy Dyer
Mary Tracy-MacAulay
Tri-Creek Education Foundation, Inc.
Trinity Evangelical Lutheran School
Michael Troxell
Gloria Tuohy
Neal Tyler

V

Monika Valente
Lynn & Allen Aron VanHouten
John & Barbara VanRamshorst
Alda Vellutini
William & Bonnie Vinovich

W

Jeremy Michael Walker
Teresa Wallace
Melissa Walley
Cyndi & Timothy Walsh
Walter Cook Insurance Agency, Inc.
Ronda Waters
Jean Wease
Gina Weilbaker
Julie & Mark Wendorf
Dianne Whiting
Mary Ann Wilczynski
Dale & Terri Williams
James M. Winiecki
Wipeco, Inc.
Suzann Wright

Y

Youche Country Club

Z

Todd & Julie Zasada
Ziese & Sons Excavating, Inc.



PHOTOS CLOCKWISE FROM LEFT: LOCAL RESIDENT HUGS NEWLY VACCINATED CAT OUTSIDE OF CLINIC / HAPPY CLIENTS OF CLINIC ARE GETTING READY TO TAKE THEIR NEWLY VACCINATED FRIEND HOME / A LOCAL VETERAN WORKING THROUGH THE H.O.P.E. PROGRAM.

With your help, thousands of pet families were able to stay together.

A CPCF grant for \$10,000 was award to The Human Society of Hobart, Inc.'s Project H.O.P.E. (Helping Our Pets Effect.)

The Human Society of Hobart (HSH) is on a mission to build and strengthen pet families. HSH builds pet families through sheltering and adopting homeless pets into loving homes.

"We believe solving pet homelessness begins by helping people and bringing equity to the availability of pet family resources," said Jenny Webber, Executive Director of the Human Society of Hobart. "Through Project H.O.P.E., HSH and its partners provide affordable veterinary care and pet resources to stray pets and pet families in need."

"The joy of owning a pet should not be a burden or worry nor experienced by only those with financial means," Webber said.

"Removing barriers to pet ownership is essential to saving the lives of the thousands of pets that die in shelters each year."

With more than 2,500 homeless pets and thousands of pet families served each year, HSH aims to fill the widening gap in field services for stray pets and access to pet family resources.

For more information about Project H.O.P.E., visit www.hshobart.org.

THE HUMANE SOCIETY OF HOBART IS ON A MISSION TO BUILD AND STRENGTHEN PET FAMILIES AND WE HAVE LONG BELIEVED THAT IF WE HELP PEOPLE, WE HELP PETS. BECAUSE OF THE SUPPORT FROM THE CPCF, WE WERE ABLE TO PROVIDE VETERINARY CARE AND VACCINES TO KEEP HOMELESS PETS HEALTHY AND PREPARE THEM FOR ADOPTION.

JENNY WEBBER
EXECUTIVE DIRECTOR
THE HUMANE SOCIETY OF HOBART



WELCOME NEW BOARD MEMBERS & STAFF

The Board of Directors and CPCF staff plays an integral role in the Crown Point Community Foundation.

The Board selects the recipients of CPCF grants, helps to solicit donations, and promotes the Foundation throughout the community.

The staff helps run the day-to-day operations of the office and works directly with donors and local nonprofits.

We are proud to welcome the following outstanding business and community leaders to the CPCF.



DICK SAUERMAN
RETIRED, NEW BUFFALO SAVINGS BANK



SHANNON SHEEHY
SHEEHY WELL & PUMP CO., INC.



DAWN KELLY
CPCF'S ACCOUNTING ASSISTANT

DICK SAUERMAN

Dick Sauerman is a Crown Point native and retired bank president/CEO who is married to Laura, a retired teacher and current Crown Point City Council member. On the family farm they raised two sons, Rick and Josh, and have been blessed with two granddaughters.

Community involvement has been important generationally to the family. Dick is a past board member of the Crown Point Community Foundation, the Southlake YMCA, Wittenburg Village, the Crown Point Rotary, the Crown Point Little League, the Hobart Industrial and Economic Development Committee, and the Harbor Country Chamber of Commerce. Presently he is also a member of the Crown Point Board of Zoning Appeals.

As a former Rotarian, Dick is committed to the Rotary motto of "Service Above Self." He is excited to be serving again on the Crown Point Community Foundation Board and being associated with such an amazing organization that is making present and generational impacts to Crown Point and South Lake County.

SHANNON SHEEHY

Shannon Sheehy was born to parents that instilled the values of hard work, humility, honesty, and service to the community. She grew up in the family business of water well drilling. After a brief thought of pursuing a career in the social sciences, she found her fit running the office for the family business and received her BS in Business Administration from IU.

She has two children, Mitch and Nathan. Nathan graduated from Hanover Central High School in 2021 and Mitch is currently a senior at Hanover. The Hanover School system is where Shannon has devoted much of her time. She served on the PTO, Band Boosters, two referendum committees, and was a founding board member of the Hanover Schools Education Foundation. She has also served with the Legacy Foundation, Meals on Wheels, Holy Name Church finance committee, and Cedar Lake Youth Baseball.

In her spare time, Shannon can be found on the golf course, pickleball courts, or in her yard enjoying the flora and fauna. She is looking forward to the opportunities to give back to the community through her work on the Crown Point Community Foundation.

DAWN KELLY

Dawn Kelly grew up in Highland and still resides there. She spends most of her summer weekends at her camper with friends and family near Shipshewana. Dawn loves to travel with her husband Scott. She has a son who resides in Schererville and a daughter that is a senior in college studying opera and wants to be a professor of music. Dawn has worked most of her life as an Administrative/Accounting Assistant and previously worked with another nonprofit.

"I love the rewarding feeling it leaves me with giving back and am so excited to be part of this wonderful organization," Dawn said of her new position at the Crown Point Community Foundation. Dawn loves to be able to help others and has been a big supporter of the St. Baldrick's Foundation for over 15 years.

MEMORIALS

NOVEMBER 1, 2023 - SEPTEMBER 30, 2024

Gordon Bates

Shirley Forney-Bates

Ralph Bennett

Ralph Bennett IV

Donald Bennett

Mike & Karen Dexter

Dr. John & Helen Birdzell

John & JoAnn Birdzell

Margaret Braccolino

Daniel Basarich

Suzanne Borto

Ralph & Dottie Bosetti

Stephen & Susan DeRolf

Mike & Karen Dexter

John & Louise Diederich

Emily Gronli

Diane & Jeff Reimer

Mark & Sue Riester

Susan Rouse

Robert & April Shoemaker

Richard & Lucille Sikora

Sandy Ziak

Rich & Kathy Zondor

Betty Jane Buth

Eugene & Linda Matzat

Wilbert E. Buth

Eugene & Linda Matzat

Jerry Caravana

Lori & Joseph Amodeo

Dave & Paula Barancyk

John & JoAnn Birdzell

Joseph & Linda Bloomfield

The Brist Family

Kenneth & Nada Buczek

Richard Caravana

Katherine & Fred Chariton

Robert & Kathleen Conard

Mark & Patti Croell

Gregory & Diane Gordon

Wayne Gruber

Larry & Roxanne Huelat

Helen Siukola Jancich

Georgene Johnson

Marge Kerr

Jeanie Kish

The Klepsch Family

Barbara Kvachkoff

Ann Libak

Roger & Mariellen Liggett

LK Properties,

Larry & Kim Geisen

Joseph & Nancy Medellin

Mike & Sandra Mendoza

Donna Moser

Keith & Mary Nielsen

Richard & Bette Oesterle

Richard & Marjorie Pankiewicz

Onie & Coral Penzato

Carole Pepa

Thomas Pruzin

Diane & Jeff Reimer

Peg Shaffer

Betty Shahbaz

Geoffrey Slaughter

Donald, Julie & Alexis Woodburn

Charles Coburn, DDS

John & JoAnn Birdzell

Thomas Coil

Robert & Karen Lynn

Deceased family members at Christmas

Jeff & Diane Reimer

Leroy Doty

John & JoAnn Birdzell

Linda Eisenhauer

John & Ann Barney

Dan & Vicky Klein

Sue Elinkowski

Ryan & Tara Elinkowski

Jim & Marge Forsythe

Barry & Margaret Wood

Dick Garretson

Marti, Chris & Bethany Garretson

Glenn W. & Bobbie Gintert

Linda & Greg Armstrong

Richard "Dick" Gordon

Gregory & Diane Gordon

Judith Hall

David & Helen Batusic

Donna & Joe Heuer

Paula Keller

Rosemary (Rosie) Hortyk

Jim, Peggy, Ed & Joanne

Al & Debbie Zacher

Karen Kish Arvin

Kay Hubbard

BJ Hubbard

Scott & Janet Bordui

Benton Scott Huddleston

Jeanne VanSlyke-Huddleston

Jean Ann Johnston

Charlotte Fedorchak

Joe & Marian Jollief

Jonathan & Margaret Jollief

Frank Josway

Allan & Sally Nalbor

Lyra Kennedy

Nancy Bishop

The Bjorklund Family

Debby Blum

Robert & Barbara Budgin

Keith Chiavetta

Patrick & Shirley Donely

Rosemarie Dubrovich

The Garnier Family

The Golden Girls from St. Anthony's

John & Susan Graun

Mary Jo Haas

Dr. Jon & Janis Hendrix

Al & Bunny Hewlett

Margaret Jancovich

Steve Kash, Marilyn &

Allen Rakestraw and Families

KJK Real Estate

Maryanna Lewis

Jonathon Lohman

Joani Polzin, Dale & Ruth Ann Marino

Nancy Mosquela

Thomas & Sue O'Brien

Trent O'Brien

Alvin & Georgene Paulauski

Sandi (Sarnicki) Petee

Connie Rettig

Lisa Rouhselange

Geraldine Semmer

Jim & Nancy Steuer

Helen Kirk

Mike & Karen Dexter

Gregory & Diane Gordon

Dan & Vicky Klein

Judith Kozlowski

Thomas Elder & Susan Driscoll Elder

Sharon Kozub

Thomas Elder & Susan Driscoll Elder

Linda LaSalle

Thomas Elder & Susan Driscoll Elder

Ryan William Lepak

Cheri Warnke

George Letz

Andy & Stephanie Wirtz

Rosemary Longfellow

Joseph & Lori Amodeo

Patricia Manis

Jim & Jill Brown

Ida Cooper

Diane & Jeff Reimer

Leonard Zelms

John & JoAnn Birdzell

Sharon L Foreman

NWI Bars, LLC

John Manis

Darryl & Patricia Miller

Keith & Mary Nielsen

Jane Rouge Martin

Thomas & Kathryn Anderson
Jeanne Brock
Wendy Conway
Heather Dawson
Linda Eisenhauer
Marta & James Fetterman
Sean & Jillian Grennan
KBCPA Accounting,
Katherine & Fred Chariton
Patricia Huber
Marge Kerr
Dan & Vicky Klein
Mary Jo Klepsch
The Nondorf Family
Allan & Sally Nalbor
Diane & Jeff Reimer
Matthew Rouge
Linda Schorlin
Ronald & Mary Weber
Meredith Jessup
Jon Beasley

Alec Matalin

Gurley Leep Automotive Family

John Mauman

Nancy Mauman

Dave McMichael

Greg & Linda Armstrong
Lisa Cameron
Robert & Janet Bailey
John & Ann Barney
David & Helen Batusic
Ralph & Dottie Bosetti
Gary Sportsmen Club
Marge & Melissa Kerr
Jane Nerney
Diane & Jeff Reimer
Bob, Nada & Romanov Family
Donald & Rose Webber

Isabelle Melchor

Suzanne Adler

Dixie Miller

Lisa Bratton

Joseph D. Nerney Jr.

Julie Abedian
Mary Ann Abraham
Joseph & Lori Amodeo
Linda & Greg Armstrong
Matt & Sandy Bapple
John & Ann Barney
David & Helen Batusic
John & JoAnn Birdzell
Ann Blanco
Megan Bobay
Suzanne Borto
Ralph & Dottie Bosetti
David & Heide Boutell
Robert & Barbara Budgin
John & Deborah Burnett
John Cain
Catherine & James Cicchiello
John & Louise Diederich
Joseph & Kim Doolin
Nancy & Frank Eksten
The Kane Family
Mary Flynn
Greg & Nancy Forsythe
Joyce Gertz
Steve & Carol Highsmith
Patricia Huber
Marge Kerr
Jackie Knight
Stephen & Kathy Leurck
Roger & Mariellen Liggett
Tom & Kathy Liss
Walter & Margaret McCarthy
Terry & Karen McMahan
Mark & Karen Mitcheltree
Robert & Anita Morris
Keith & Mary Nielsen
Jody Ohm
Dakota Pawlicki
Faye Platt
Mark & Linda Plewniak
Diane & Jeff Reimer
Mark & Sue Riester
Michael & Jill Schrage
Tim & Peg Sendak
Geraldine Shaw
Kenneth & Marlene Sledz
Gilbert & Gail Stiener

Amy Boerger & Brad Stinebring
William & Bonnie Stoloski
Chris & Lynn VanDenburgh
William & Bonnie Vinovich
Philip & Christena Wichowsky
The Wojtas Family
Ted & Lin Zapinski
Michael & Lisa Zdanowicz
Rich & Kathy Zondor

Celia Newcomb

Lori & Joseph Amodeo
Gail & Dave Andre
Kala Maske & Family
David & Rona Lasser
Darryl & Patricia Miller
Donald Newcomb
Ronald & Nancy Newcomb
Keith & Mary Nielsen
Amy O'Brien
Kathy O'Brien
Michael & Valerie Pennanen
Steven Sly
Suellen Stookey
Dan & Debbie Virkler
Bill & Kasha Newcomb
Jeffrey Newcomb
Diane & Jeff Reimer
Jim Newcomb

Michael O'Brien Sr

Carol Drasga
Frank & Nancy Eksten
Steve Howard
Diane O'Brien

Teresa Petrilena

Dan & Vicky Klein

Jack Pettit

Jessica Pettit Albaugh
Chip & Karin Pettit

Janie Pierce

David & Helen Batusic
Rich & Kathy Zondor

Gene (Jean) Pilarski,

Jeanne VanSlyke-Huddleston

Roseann Quilling

David & Darlene McMichael

Craig Reese

Penelope Castor

Maureen Rogers

Marge Kerr
Joseph & Jane Nerney

Lawrence Rouge

Terese Rouge

Lawrence "Larry" Saylor

The Glick Family Foundation,
Gary Stratton

Maxie Scott

Dr. Raymond & Carol Bucur
Kevin & Darlene Cowan
Joseph Granger
Marge & Melissa Kerr
Corey & Charlotte Liss
Judy Nack
Debbie Thill
Donald & Rose Webber
Linda & Greg Armstrong
Tom & Kathy Liss
Darlene McMichael
Jane Nerney
Keith & Mary Nielsen
Diane & Jeff Reimer
Ron & Deb Simko

John Thomas Seaman Jr.

Phil Seaman

John & Barbara Seaman

South Lake Medical Realty, LLC

John Simko

Matt and Sandy Bapple
Patricia Huber
Diane & Jeff Reimer

MEMORIALS

NOVEMBER 1, 2023 - SEPTEMBER 30, 2024

MEMORIALS, CONTINUED FROM PAGE TWENTY-NINE

Mark Allen Smedstad

Thomas Elder & Susan Driscoll Elder

Rose Smith

Diane & Jeff Reimer

Jacquelyn Stahl

Steve & Kathy Lessner

Lorraine Viers Steuer

Coleen Viers

Lisa Schaefer Stover

Kenneth & Rita Backe

Marie Van Slyke-Bean

Jeanne VanSlyke-Huddleston

Richard Terry VanSlyke

Jeanne VanSlyke-Huddleston

Robert R. VanSlyke, Sr.

Jeanne VanSlyke-Huddleston

Roger C. VanSlyke

Jeanne VanSlyke-Huddleston

Richard Terry VanSlyke

Jeanne VanSlyke-Huddleston

Craig Viers

Joseph & Lori Amodeo

Coleen Viers

James Eric Wayco

Kathleen Adams

Lori & Bret Botkin

Raymond Chapala

Bryce & Stephanie Currie

Gloria Currie

Frances Danek

Robert & Diane Greaney

Robert & Nadean Hartman

Margaret Helders

Dotty Johnson

Mitzi & Kenneth Levander

Karen Lockwood

LOFS Women's Golf Association

Morgan Distributing, Inc.

James & Kimberly Packard

Linda Pasternak

Lara Pelton

Donn & Linda Peterson

Robert & Barbara Punak

Tulsi & Kamini Sawlani

Martha (Marti) Simmons &

Andrea Lauren Hunt

Bonnie Soltesz

Thomas & Sharon Strbjak

Sharon Wilkinson

James & Barbara Wood

Jim Wirtz

John & Louise Diederich

Dan & Vicky Klein

Antoinette "Toni" Worley

Steve & Kathy Lessner

HONORARIUMS

NOVEMBER 1, 2023 - SEPTEMBER 30, 2024

John & Ann Barney

Craig & Janet Duchossois

Gordon Bates' Birthday

Shirley Forney-Bates

John Cain

Carol Green-Fraley

Pene Castor

Dale & Terri Williams

Larry & Kim Geisen at Christmas

Jonathon & Tina Christiansen

Troy & Airel DeBaun

Teresa Dille

Anthony & McKenzie Geisen

Dan & Kim Greco

Taylor Jones

Gus & Michelle Katsaros

Jeffery & Deborah Kelley

Lowell Killion

Bill & Deb Kolloway

Jeff & Jean Lahm

Bob & Cinta Lowe

Ron & Janet Mesarch

Wendy Schreiber

David & Sally Szumski

Alyssa Wilson

Sandra Noe Retirement

Trish Alt

Penelope Castor

Diane & Jeff Reimer

Jack Pettit

Jessica Pettit Albaugh

Faye Platt's Birthday

Laura & Tom Bertagnoli

Jeff & Julie Pape

Mark Platt

Simon Platt

Tom Platt & Uta Rehm

Terri & Dale's 50th Anniversary

Penelope Castor

JoAnne Tubb's Birthday

Dan & Vicky Klein

Mary Jo Klepsch

Joseph & Carol Sanders

Carol Drasga

Martha "Marty" Wheeler

John & JoAnn Birdzell

Dean White's Birthday

Craig White



WAYS TO GIVE...FOR TODAY AND TOMORROW

- 1. Cash** - Cash donations can be made by mail, dropping off at our office, or online.
- 2. Stocks or Securities** - The Foundation has the ability to accept gifts of publicly traded stocks.
- 3. IRA Distributions** - Qualified Charitable Distributions can be made directly to the Foundation from your IRA custodian, reducing taxable income (*Distributions cannot be directed to a Donor Advised Fund*).
- 4. Wills and Bequests** - Talk with your attorney and name the Crown Point Community Foundation as a beneficiary of all or a portion of your estate. Please use the following wording - "I give or bequeath to the Crown Point Community Foundation, 115 S. Court St., Crown Point, Indiana % or the sum of \$ of my residuary estate."
- 5. Life Insurance** - You can designate all or a portion of your life insurance policies, potentially saving Indiana inheritance tax and federal estate taxes.



5

Five Questions for Dick Sauerman

MEMBER OF THE BOARD OF DIRECTORS
INVESTMENT COMMITTEE

Dick Sauerman grew up in a family of five with his sister Nancy Forsythe and his brother Dave being the fifth generation to live on the family farm in Crown Point. He married Laura in 1981. They have two sons, Rick and Josh, and two granddaughters, Elizabeth and Abigail. Dick graduated from Valparaiso University with a degree in economics and has an MBA from IUN. His career was in banking, where he became a commercial banker, moved into the positions of Chief Credit Officer, Director of Commercial Banking and ultimately, the president and CEO of New Buffalo Savings Bank. "I feel very privileged to again be a part of the team," he said of his second time serving on the CPCF Board.

1. What attracted you to the Crown Point Community Foundation?

A community is only strong when its citizens, churches, businesses and civic organizations work hand in hand together. The Crown Point Community Foundation is a catalyst to make this happen by recognizing community needs and opportunities and coordinating the time and treasure of the community's citizens and stakeholders for the greater good of Crown Point and South Lake County.

2. Favorite hobbies?

I love to golf and read. Now that I'm retired, I'm planning on returning to a passion I had growing up: model railroading.

3. Who are your heroes?

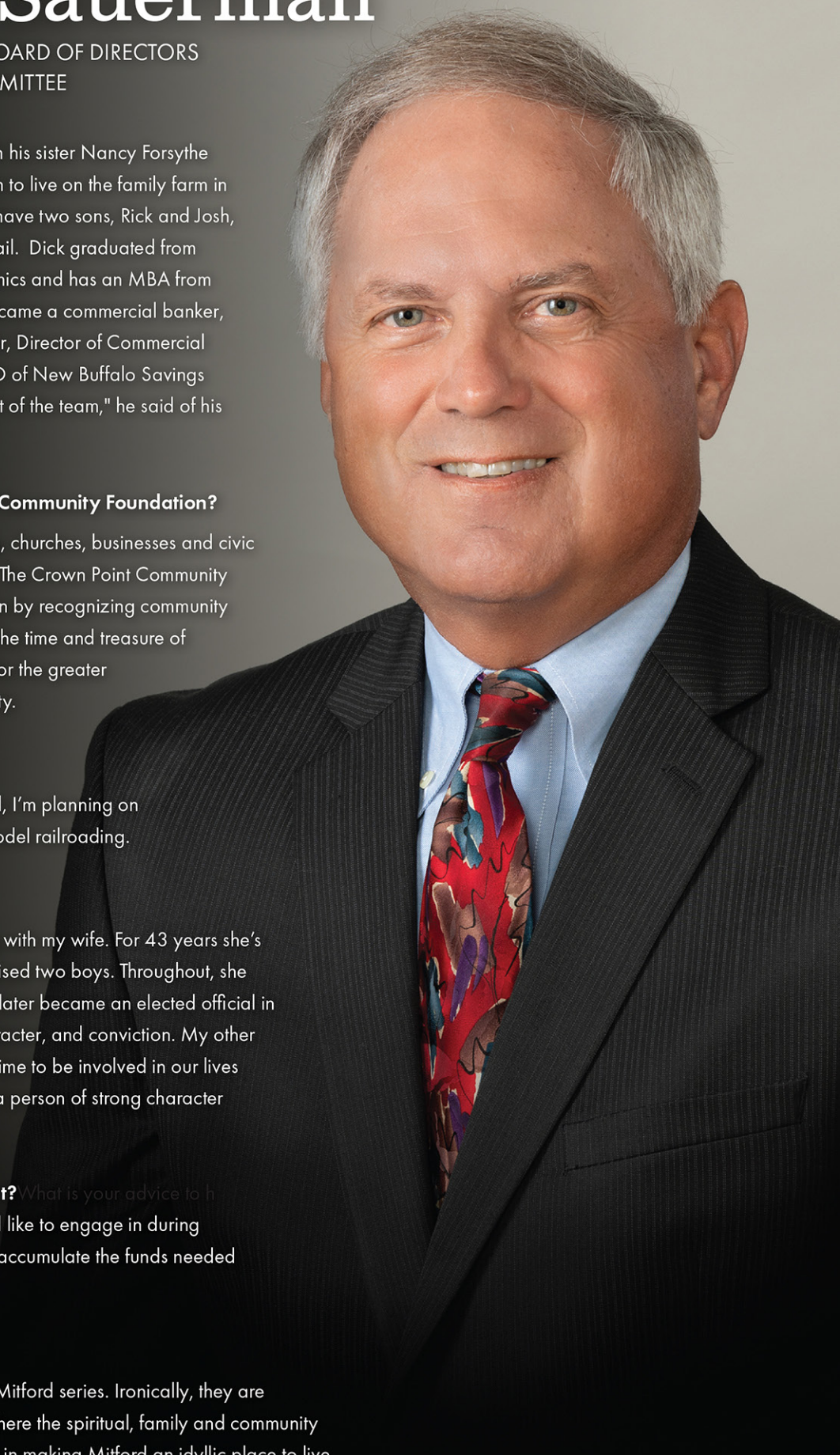
My heroes are my family members, starting with my wife. For 43 years she's been the glue in our family of four as we raised two boys. Throughout, she taught school, was involved in church, and later became an elected official in the city. She is a person of strong faith, character, and conviction. My other main hero was my dad. He always made time to be involved in our lives growing up and was well known as being a person of strong character and integrity.

4. What advice do you have for retirement? *What is your advice to h*

While young, consider what activities you'd like to engage in during retirement and take concrete steps early to accumulate the funds needed to make your dream come true.

5. What's the last book you read?

Actually, it's a series of books: Jan Karon's Mitford series. Ironically, they are about the small, fictional town of Mitford where the spiritual, family and community needs of the towns' people are all involved in making Mitford an idyllic place to live.





CROWN POINT
**community
foundation™**

PO Box 522
Crown Point, IN 46308

CREATING A BETTER FUTURE
IN SOUTH LAKE COUNTY

TOGETHER WE BUILD A BETTER TOMORROW

The Crown Point Community Foundation is a public charity. Small donations are just as important as large donations to make sure that we serve the public's best interests.

OUR SUPPORT FOR THE COMMUNITY DOES NOT COME FROM JUST ONE PERSON, ONE FAMILY, OR ONE COMPANY BUT A STEADY STREAM OF CONTRIBUTIONS FROM A BROAD CROSS-SECTION OF THE GENERAL PUBLIC.

If you have a cause you care about in the community, we have a fund to support your interest. It's easy to make a donation. Mail your check today in the enclosed envelope provided or simply donate online at: theccpf.org/donate.html. We invite you to be a part of your public Foundation so that together we can do more good things in our community!

Upcoming Crown Point Community Foundation Events:

Giving Tuesday | Tuesday, December 3, 2024

Scholarship Applications for Graduating High School Students, College Students and Adult Learners Open | Wed., January 1, 2025

Volunteer Fair | Saturday, March 1, 2025



HELP US LEAD, ENGAGE AND ENRICH OUR COMMUNITY

Community Partners are local companies or individuals who join forces with the Crown Point Community Foundation to promote and expand philanthropy, address community issues, and develop nonprofit excellence.



DEAN AND
BARBARA WHITE
FAMILY FOUNDATION

Edward Jones
MAKING SENSE OF INVESTING

EUGENE AND
JEAN WEASE

first
first financial bank

**First Merchants
Bank**
THE STRENGTH OF BIG THE SERVICE OF SMALL

Franciscan HEALTH
Crown Point

Geisen
FUNERAL HOMES
Since 1867

**H
SG**
HALLS
OF
ST. GEORGE

HOFFMAN
CHARITABLE FOUNDATION

JOHN & ANN BARNEY
FAMILY FOUNDATION

LAMAR
ADVERTISING COMPANY

Morgan Stanley

NIPSCO

**Peoples
Bank**
A FINWARD
COMPANY



THE TIMES | nwi
MEDIA COMPANY | .com

WALSH ADVISORS
BOUTIQUE WEALTH MANAGEMENT